

Gateway Program

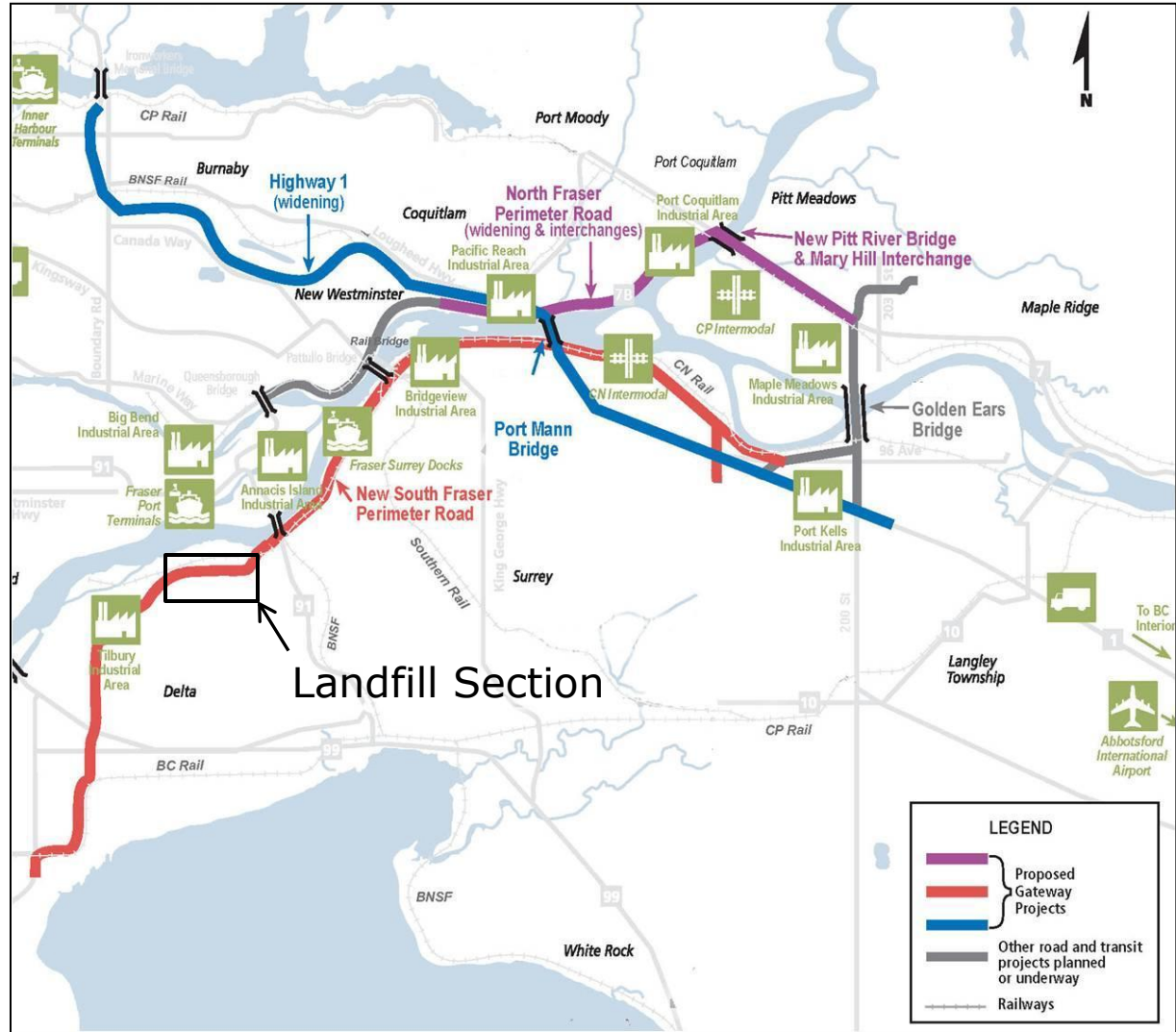


South Fraser Perimeter Road

EMA of BC Workshop

Landfill Closure Project - February 21, 2013

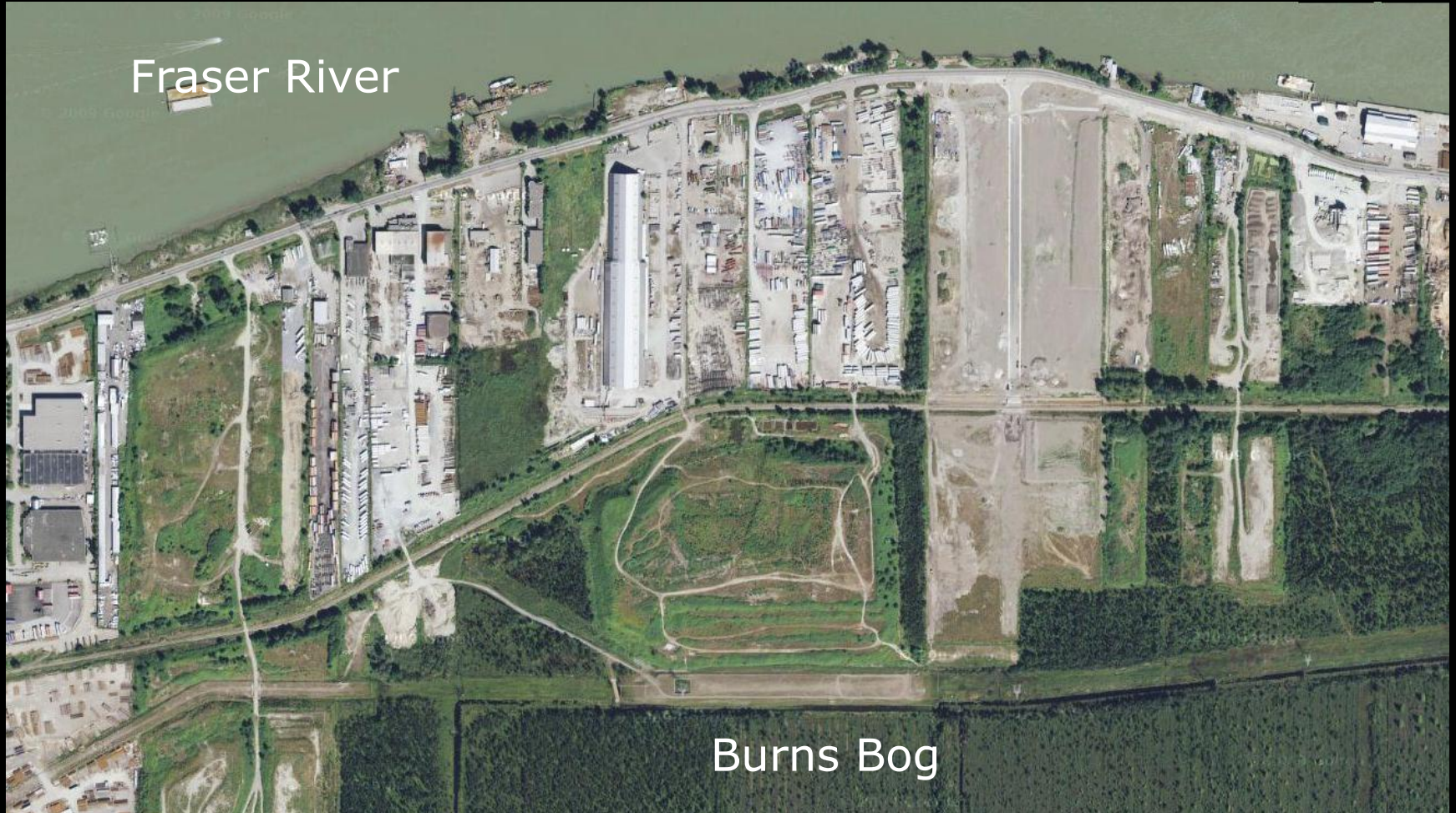
Gateway Program Overview



SFPR Landfill Project Overview

- Alignment crosses 5 historic DLC waste Landfills
- Alignment was chosen to maximize potential of underutilized industrial land
- Key supporters are the Corporation of Delta, Ministry of Environment, neighbouring landowners
- Proper closure of these landfills has been identified as a key component in the future development potential of the area

Location Map: Pre-Construction



Location Photo: Pre-Construction



Landfill Closure – Phase 1

Required Work:

- Excavation of landfill material
- Temporary cover
- Highway Construction

Risks:

- Landfill fire
- Leachate

Permits Required

- Waste Discharge Permit-Ministry of Environment
 - To create Beta Lands
- Landfill Closure Plan-Ministry of Environment
 - To close the landfills
- Waste Discharge Permit-Metro Vancouver
 - To discharge leachate to the sanitary sewer

Phase 1 – Construction Waste Movement



Phase 1 - Temporary Cover



Phase 1 - Highway Construction in Landfill



Landfill Closure Phase 2

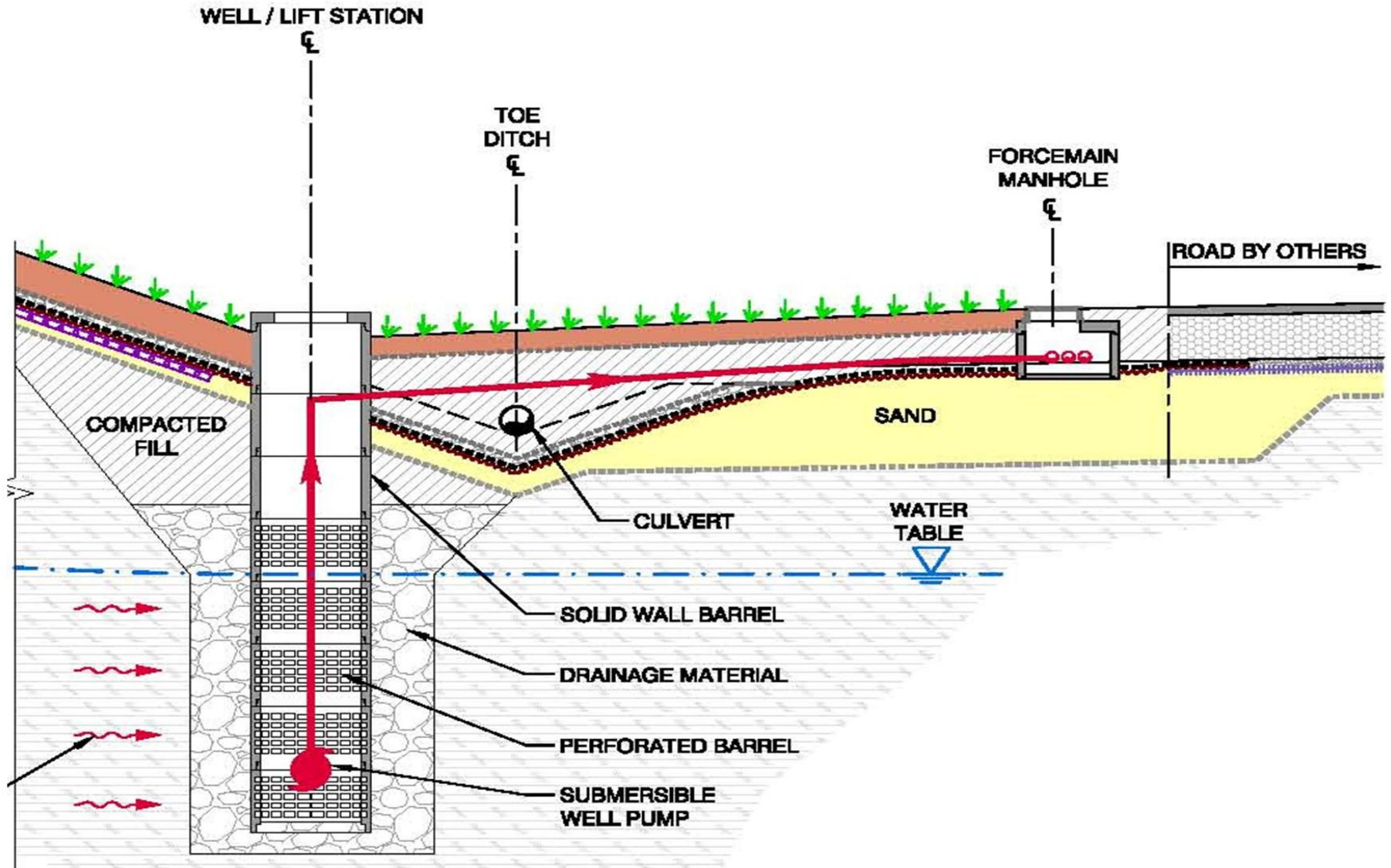
Required Work:

- Capping of Landfills
- Leachate Collection System
- Landfill Gas Collection

Risks:

- Landfill fire
- Leachate

Leachate Collection Cross Section



Phase 2 – Leachate Collection System



Phase 2 - Leachate Collection System



Leachate Collection System

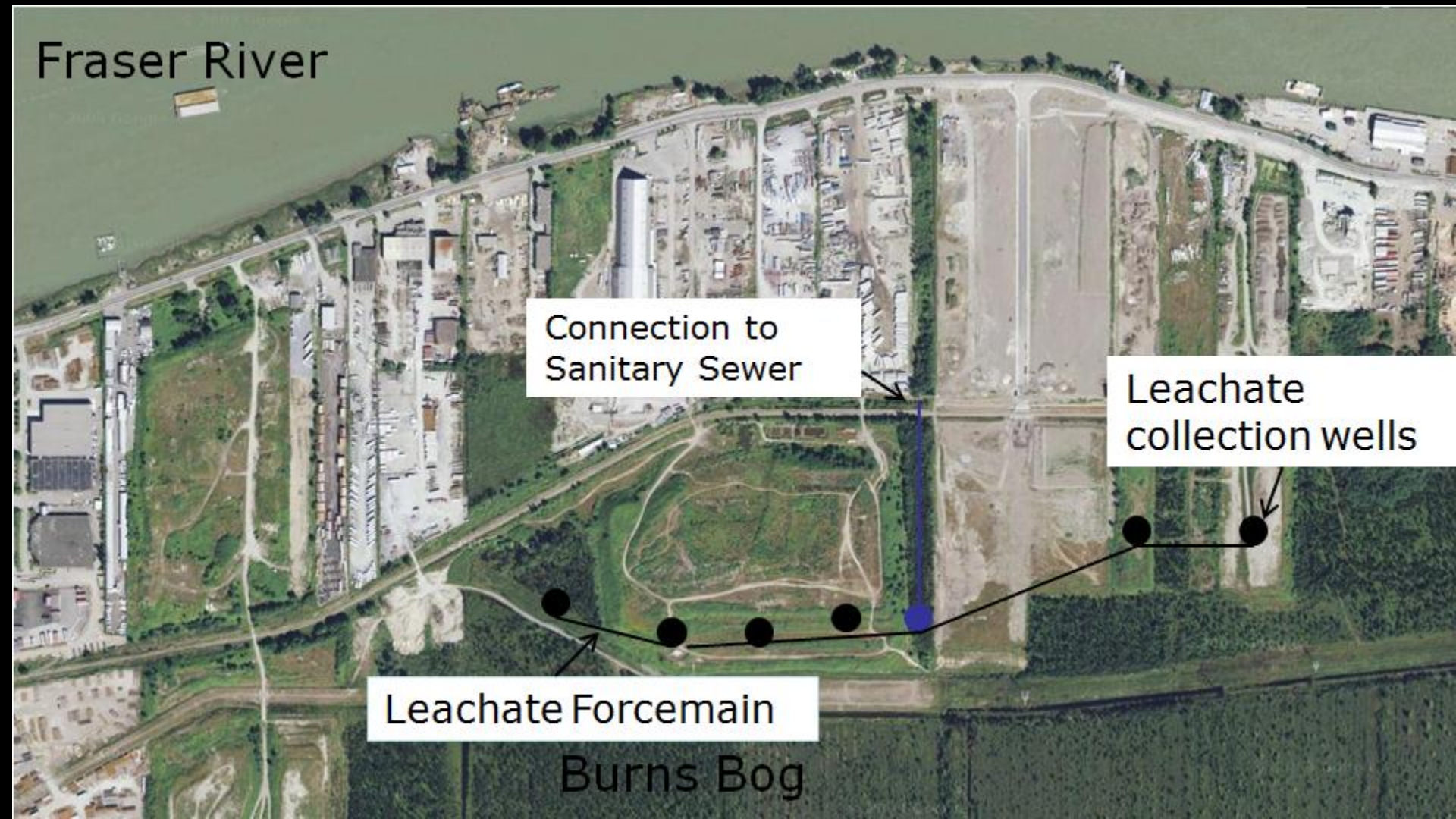
Fraser River

Connection to
Sanitary Sewer

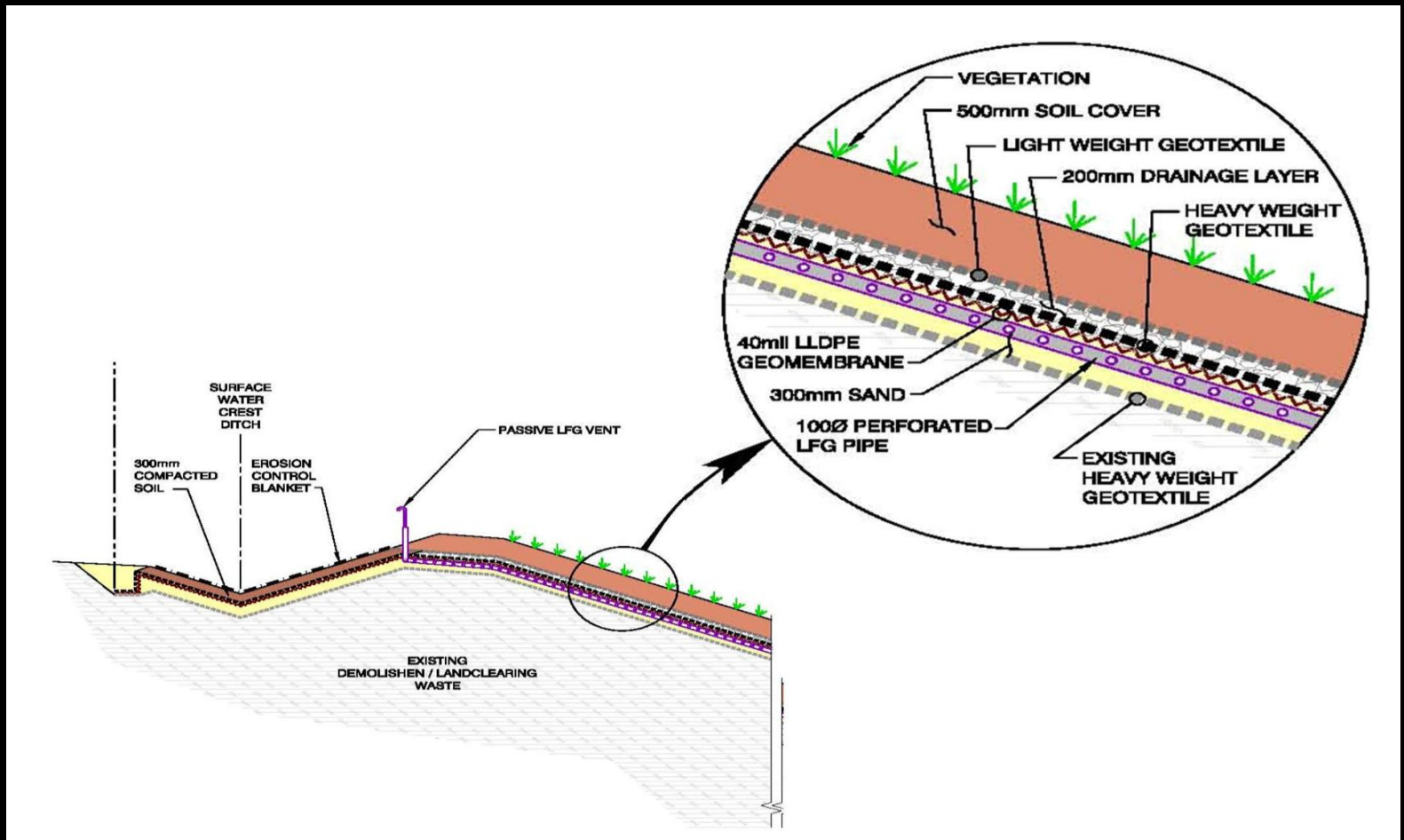
Leachate
collection wells

Leachate Forcemain

Burns Bog



Phase 2 - Landfill Cover Cross Section



Phase 2 - Gas Collection System



Phase 2 - Geomembrane on DSS



Phase 2 - Geomembrane on Beta



Phase 2 - Drainage Gravel



Phase 2 - Soil and Erosion Protection



Before Construction



Halfway through



Beta Lands Completed



DSS Completed



The Results



Gateway Program



South Fraser Perimeter Road

EMA of BC Workshop

Landfill Closure Project - February 21, 2013