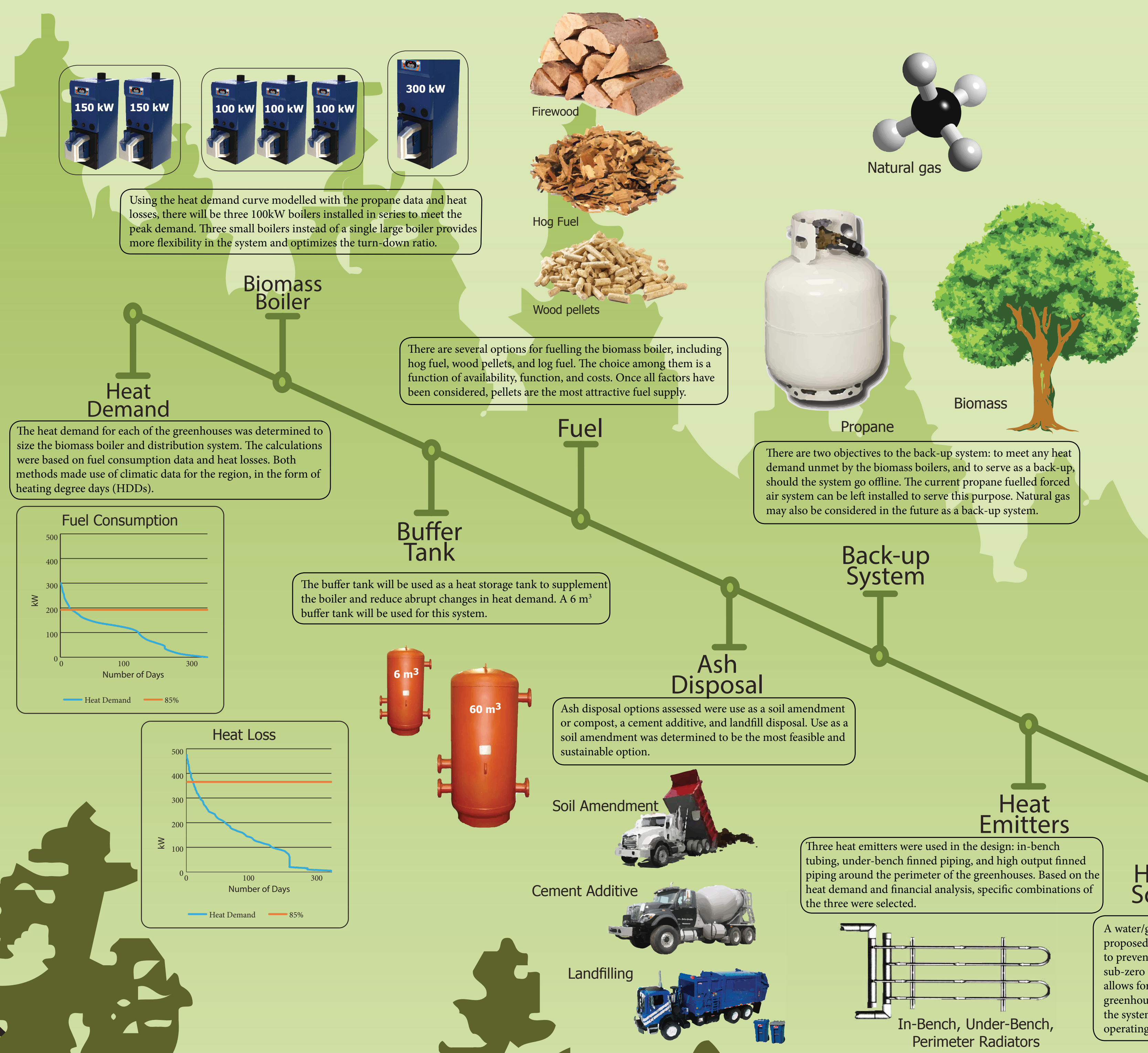


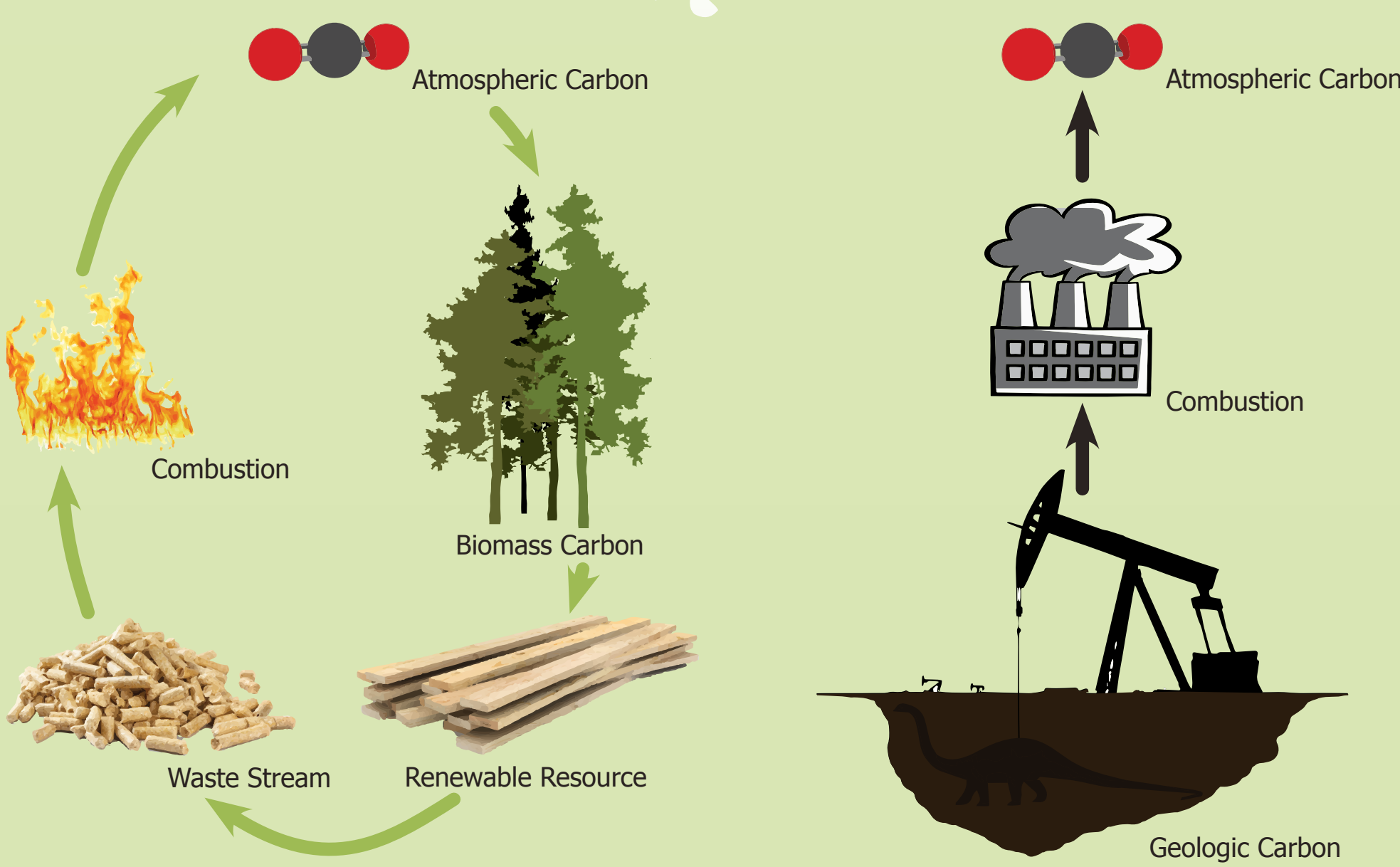
Background

This is a biomass conversion project for a nursery heated by propane. The Twin Sisters Native Plants Nursery, a partnership between the Salteau and West Moberly First Nations, would showcase the ease with which these systems are installed and operated, as well as the financial viability of renewable, sustainable fuel.

Timeline

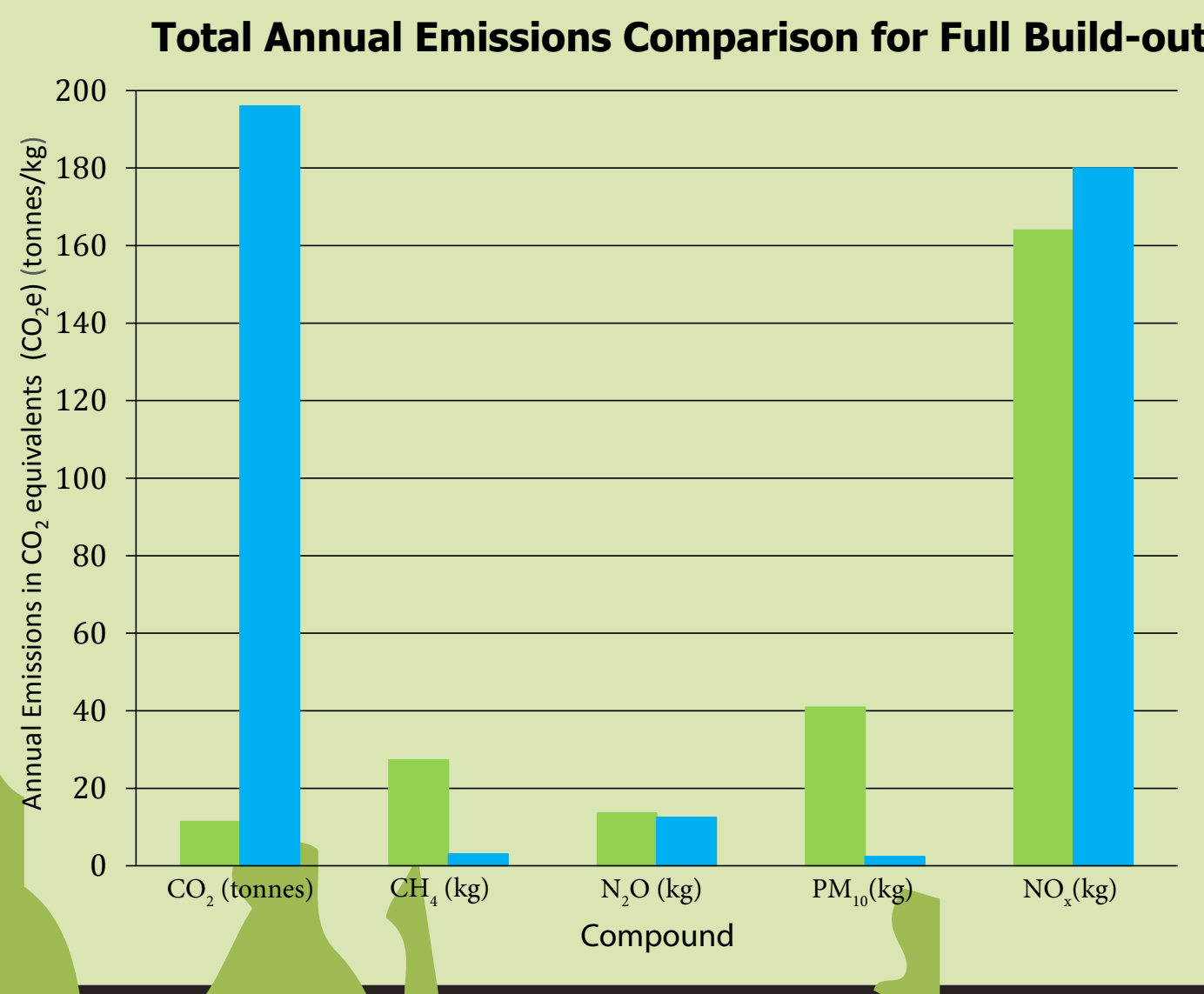


Biomass vs Propane: Resources and Emissions

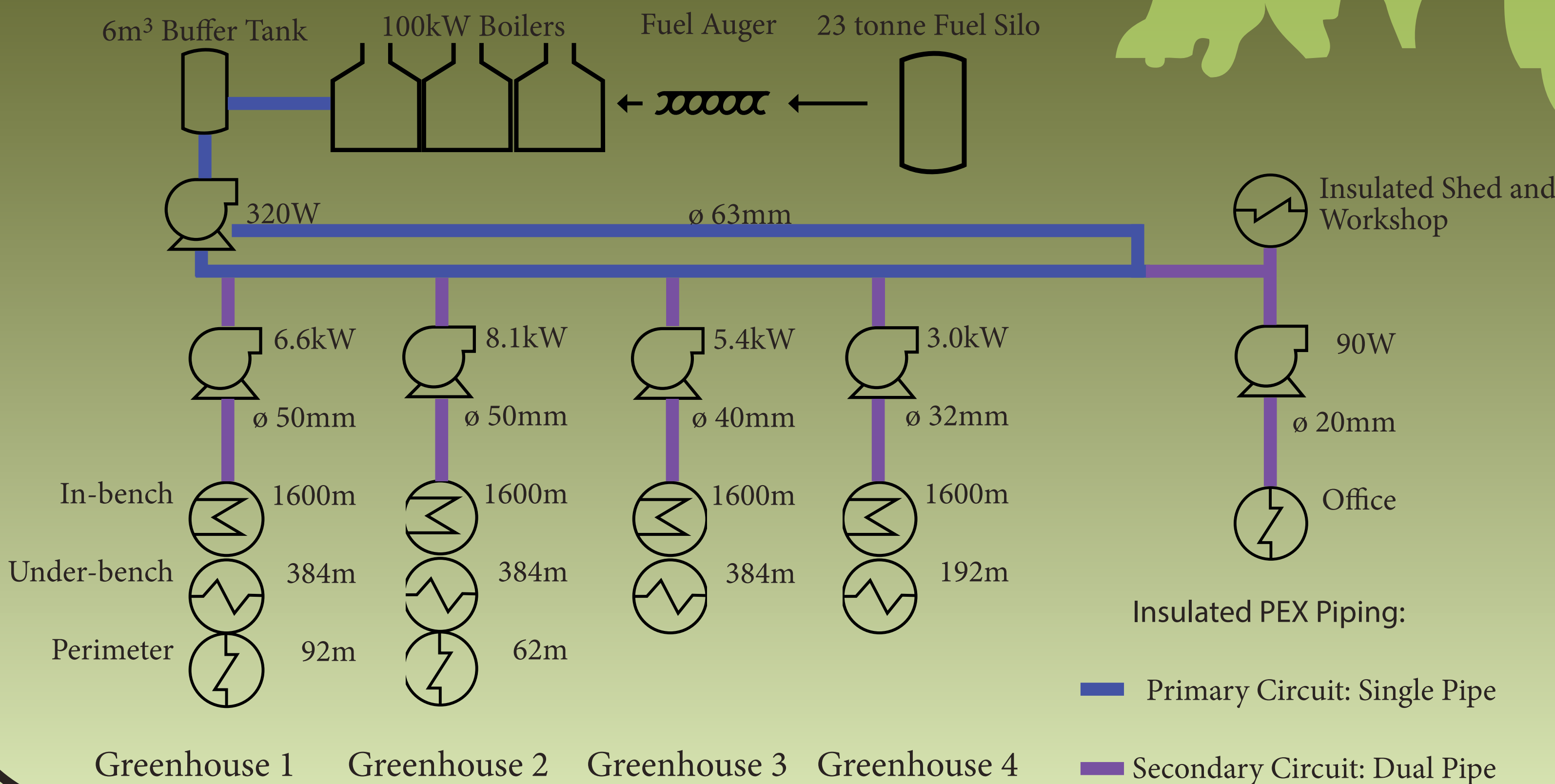


Biomass carbon is part of a relatively rapid natural cycle. In the case of wood pellets in BC, they are made from a waste stream that would otherwise be incinerated.

Fossil fuel combustion transfers geologic carbon into the atmosphere. The vital difference between biomass and fossil fuels is time scale.



Final Design Layout



Financial Analysis (Cash Flow Analysis)

Costs	Propane	Pellets
Capital Investments	\$ 0.00	\$ 652,521.28
Maintenance & Operations	\$ 109,200.00	\$ 35,863.84

Financial Indicators	
Internal Rate of Return (IRR) (%)	7%
Discounted Payback Period (years)	8.6 years
Equivalent Annual Benefits (\$)	\$ 73,336

