



BROWNFIELD TO BUS DEPOT







PROJECT  SNAPSHOT

HAMILTON TRANSIT CENTRE



7

YEARS TO COMPLETE



700

EMPLOYEES AT FULL OPERATING CAPACITY



9,640M³

OF CONCRETE



3

FUEL TYPES AVAILABLE: GASOLINE, DIESEL & CNG



73,400M²

SITE AREA



1,512

TONNES OF STEEL



22

VEHICLE MAINTENANCE BAYS



14,760M²

BUILDING AREA



178,000M³

OF PRELOAD MATERIAL



Hamilton Transit Centre

LEED Canada-NC 2009 Summary Scorecard

Yes ?Y ?N No

53			57	Project Totals (pre-certification estimates)	110 Possible Points
Certified 40-49 points Silver 50-59 points Gold 60-79 points Platinum 80 points and above					

17 Sustainable Sites 9 26 Points

Yes	?Y	?N	No		
Y				SSp1	Construction Activity Pollution Prevention Site Selection Required
1				SSc1	1
			5	SSc2	Development Density and Community Connectivity 3,5
1				SSc3	Brownfield Redevelopment 1
6				SSc4.1	Alternative Transportation: Public Transportation Access 3,6
1				SSc4.2	Alternative Transportation: Bicycle Storage & Changing Rooms 1
3				SSc4.3	Alternative Transportation: Low-Emitting & Fuel-Efficient Vehicles 3
2				SSc4.4	Alternative Transportation: Parking Capacity 2
			1	SSc5.1	Site Development: Protect and Restore habitat 1
			1	SSc5.2	Site Development: Maximize Open Space 1
1				SSc6.1	Stormwater Design: Quantity Control 1
1				SSc6.2	Stormwater Design: Quality Control 1
			1	SSc7.1	Heat Island Effect: Non-Roof 1
1				SSc7.2	Heat Island Effect: Roof 1
			1	SSc8	Light Pollution Reduction 1

7 Water Efficiency 3 10 Points

Yes	?Y	?N	No		
Y				WEP1	Water Use Reduction Required
4				WEC1	Water Efficient Landscaping 2,4
			2	WEC2	Innovative Wastewater Technologies 2
3			1	WEC3	Water Use Reduction 2-4

13 Energy & Atmosphere 22 35 Points

Yes	?Y	?N	No		
Y				EAp1	Fundamental Commissioning of Building Energy Systems Required
Y				EAp2	Minimum Energy Performance Required
Y				EAp3	Fundamental Refrigerant Management Required
9			10	EAc1	Optimize Energy Performance 1-19
			7	EAc2	On-Site Renewable Energy 1-7
2				EAc3	Enhanced Commissioning 2
2				EAc4	Enhanced Refrigerant Management 2
			3	EAc5	Measurement and Verification 3
			2	EAc6	Green Power 2

Target LEED Rating: Silver

Current Rating: Silver

Latest Update: 2017-01-03



4 Materials & Resources 10 14 Points

Yes	?Y	?N	No		
Y				MRp1	Storage and Collection of Recyclables Required
			3	MRc1.1	Building Reuse: Maintain Existing Walls, Floors, and Roof 1-3
			1	MRc1.2	Building Reuse: Maintain Interior Non-Structural Elements 1
2				MRc2	Construction Waste Management 1-2
			2	MRc3	Materials Reuse 1-2
2				MRc4	Recycled Content 1-2
			2	MRc5	Regional Materials 1-2
			1	MRc6	Rapidly Renewable Materials 1
			1	MRc7	Certified Wood 1

8 Indoor Environmental Quality 7 15 Points

Yes	?Y	?N	No		
Y				EQp1	Minimum Indoor Air Quality Performance Required
Y				EQp2	Environmental Tobacco Smoke (ETS) Control Required
1				EQc1	Outdoor Air Delivery Monitoring 1
			1	EQc2	Increased Ventilation 1
1				EQc3.1	Construction IAQ Management Plan: During Construction 1
			1	EQc3.2	Construction IAQ Management Plan: Before Occupancy 1
1				EQc4.1	Low-Emitting Materials: Adhesives and Sealants 1
1				EQc4.2	Low-Emitting Materials: Paints and Coatings 1
1				EQc4.3	Low-Emitting Materials: Flooring Systems 1
1				EQc4.4	Low-Emitting Materials: Composite Wood and Agrifibre Products 1
1				EQc5	Indoor Chemical and Pollutant Source Control 1
1				EQc6.1	Controllability of Systems: Lighting 1
			1	EQc6.2	Controllability of Systems: Thermal Comfort 1
			1	EQc7.1	Thermal Comfort: Design 1
			1	EQc7.2	Thermal Comfort: Verification 1
			1	EQc8.1	Daylight and Views: Daylight 1
			1	EQc8.2	Daylight and Views: Views 1

1 Innovation in Design 5 6 Points

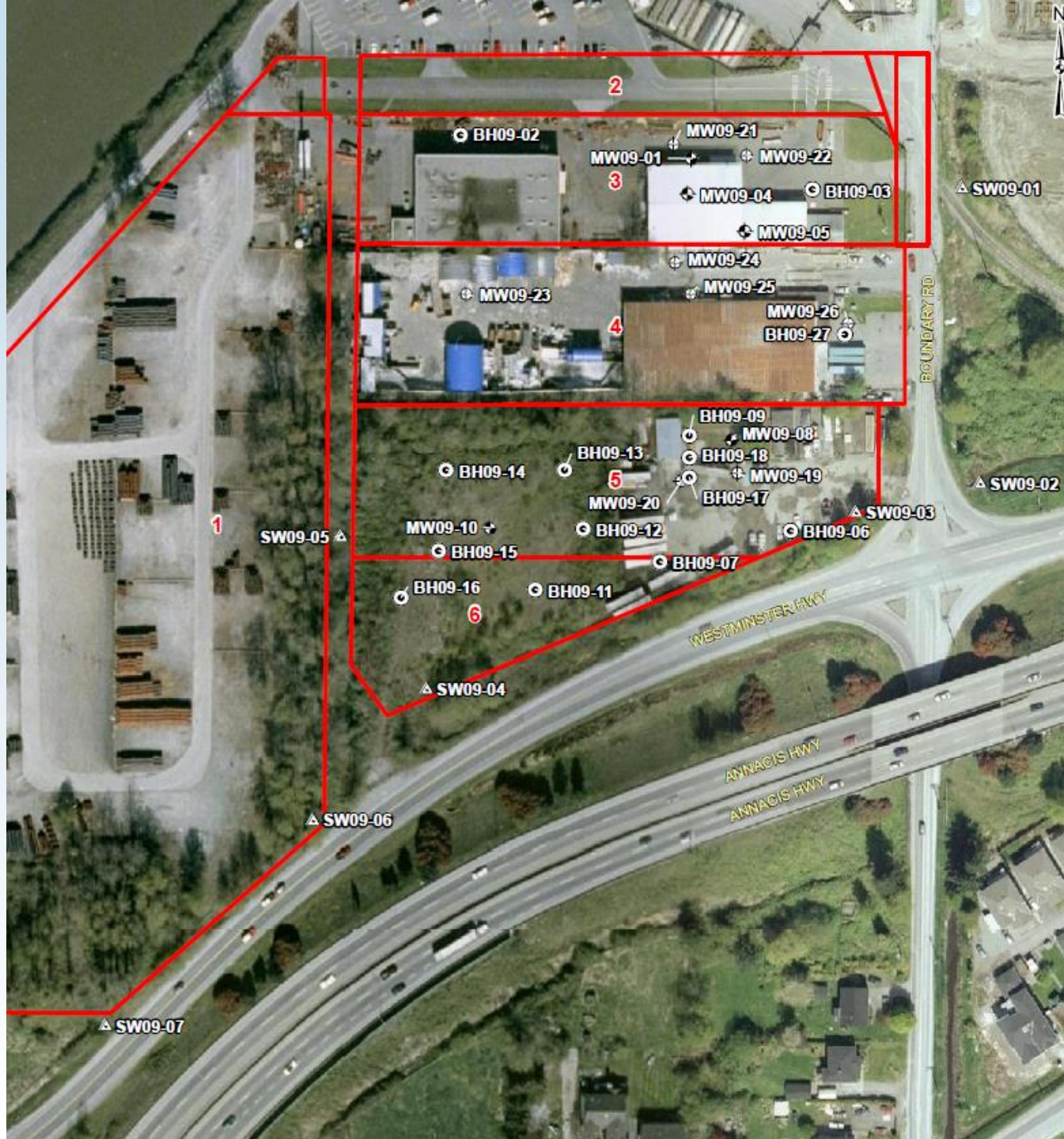
Yes	?Y	?N	No		
			1	IDc1.1	Innovation in Design: 1
			1	IDc1.2	Innovation in Design: 1
			1	IDc1.3	Innovation in Design: 1
			1	IDc1.4	Innovation in Design: 1
			1	IDc1.5	Innovation in Design: 1
1				IDc2	LEED® Accredited Professional 1

3 Regional Priority 1 4 Points

Yes	?Y	?N	No		
			1	RPc1	Durable Building 1
1				RPc2.1	Regional Priority Credit: SSc6.1 1
1				RPc2.2	Regional Priority Credit: WEC3 (>35%) 1
1				RPc2.3	Regional Priority Credit: MRC2 (>75%) 1







- LEGEND**
- Borehole Location
 - Monitoring Well Location
 - Monitoring Well Approximate Location
 - Surface Water Sample Location
 - Property Boundary

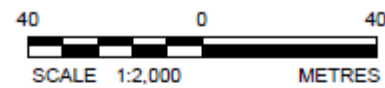
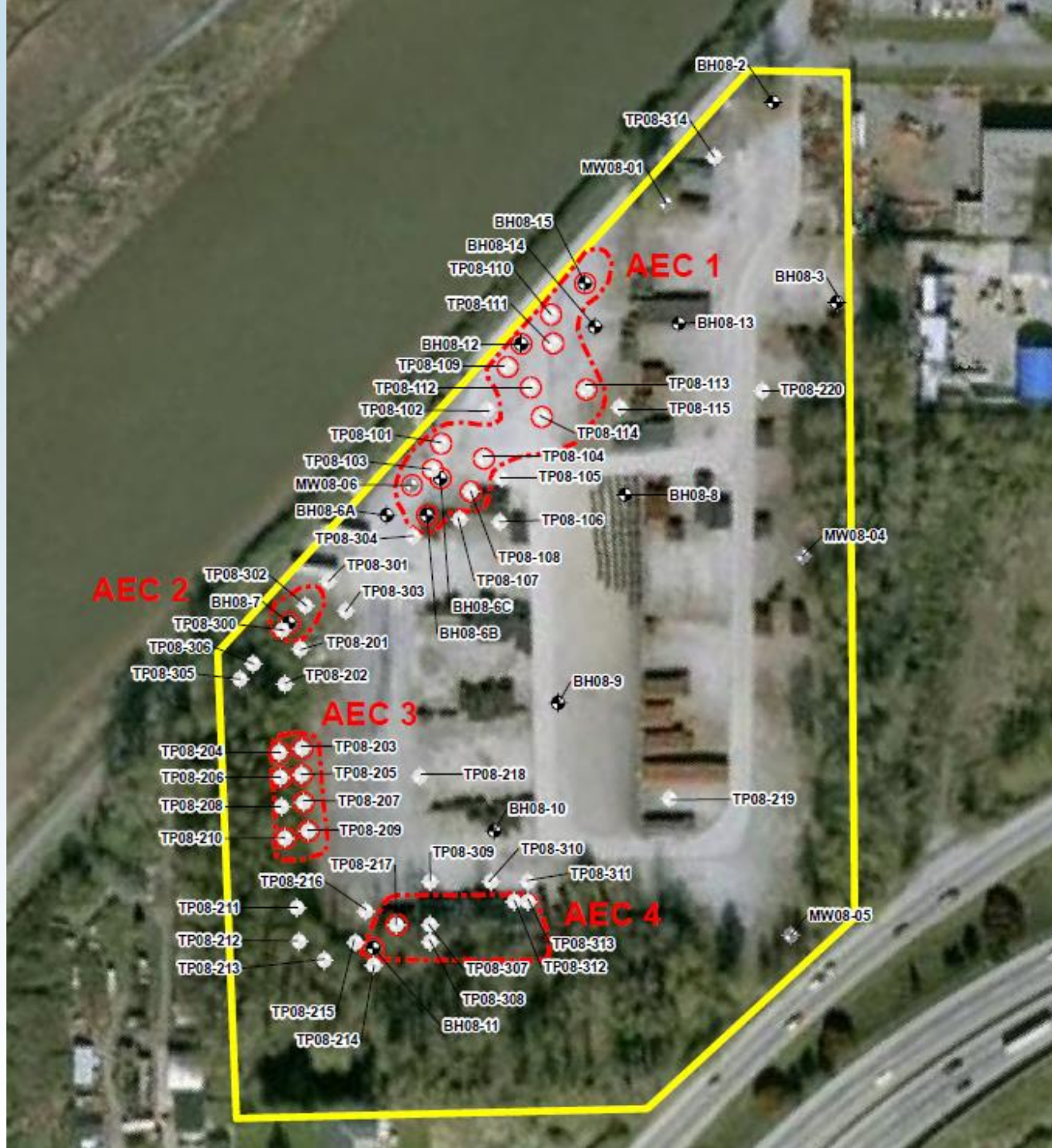
REFERENCE
 Image ©2009 IMTCAN, ©2009 McElharmey, obtained from Google Earth Pro ©2008.
 Projection: UTM Zone 10 Datum: NAD 83

DRAFT



PROJECT		TRANSLINK DUE DILIGENCE REVIEW RICHMOND, B.C.	
TITLE			
SAMPLE LOCATION PLAN			
PROJECT No. 09-1536-002		DRAWG. No.	
DESIGN	IP	DATE	REV. 0
GIS	CD	22APR09	
CHECK			
REVIEW			

FIGURE 1




PROJECT		TREE ISLAND INDUSTRIES 23660 RIVER RD., RICHMOND, B.C.	
TITLE		AREAS OF ENVIRONMENTAL CONCERN	
 Golder Associates Burnaby, B.C.	PROJECT NO.	08-1436-0027	SCALE AS SHOWN
	DESIGN	PM 11 Apr. 2008	REV. 0
	GIS	MCM 11 Jul. 2008	
	CHECK		
RPV/FW			

FIGURE 1

Scope of Work Discussion

- Wildlife
- Government Organizations
- Site-Specific Issues
- Design / Construction Solutions

Questions?

Thank you!

wsp.com

wsp