

Salmon-Safe

*Incentivizing Better Environmental Outcomes in the
Urban Realm*

Amy Greenwood | EMA BC Presentation | 18 May 2017



Partners & Supporters

Partners:



Fraser Basin Council

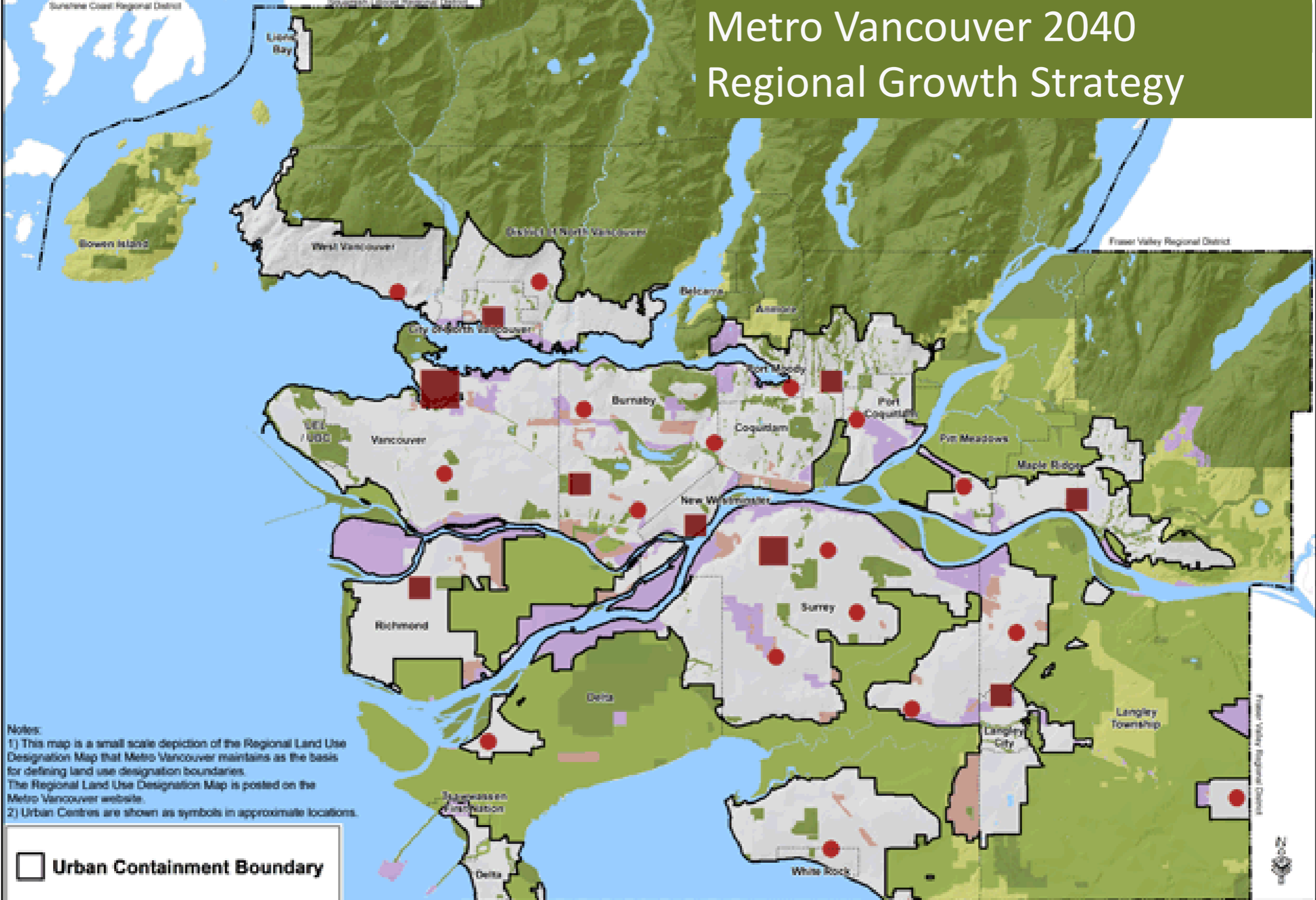
Supporters:



**TD Friends of the
Environment
Foundation**



Metro Vancouver 2040 Regional Growth Strategy



Notes:
 1) This map is a small scale depiction of the Regional Land Use Designation Map that Metro Vancouver maintains as the basis for defining land use designation boundaries. The Regional Land Use Designation Map is posted on the Metro Vancouver website.
 2) Urban Centres are shown as symbols in approximate locations.

Urban Containment Boundary

Urban Designations

General Urban	Metropolitan Core	Regional City Centres
	Surrey Metro Centre	Municipal Town Centres

Industrial
Mixed Employment

Non-Urban Designations

Conservation & Recreation	Agricultural	Rural
---------------------------	--------------	-------

Boundaries

Metro Vancouver
Municipal





Fisheries and Oceans Canada / Pêches et Océans Canada

DANGER

SHELLFISH AREA CLOSED  **SECTEUR FERMÉ À LA RÉCOLTE DES MOLLUSQUES**

CLAMS, MUSSELS, OYSTERS & OTHER BIVALVE MOLLUSCS IN THIS AREA ARE UNSAFE FOR HUMAN CONSUMPTION BECAUSE OF **CONTAMINATION OR PARALYTIC SHELLFISH POISON.**

LES CLAMS, LES MOULES, LES HÛTRES ET LES AUTRES MOLLUSQUES BIVALVES DE CE SECTEUR SONT IMPROPRES À LA CONSOMMATION À CAUSE DE **LA CONTAMINATION OU DE LA PRÉSENCE DE TOXINE PARALYSANTE.**

HARVESTING PROHIBITED

RÉCOLTE INTERDITE

REPORT VIOLATIONS
1-800-465-4336

Canada

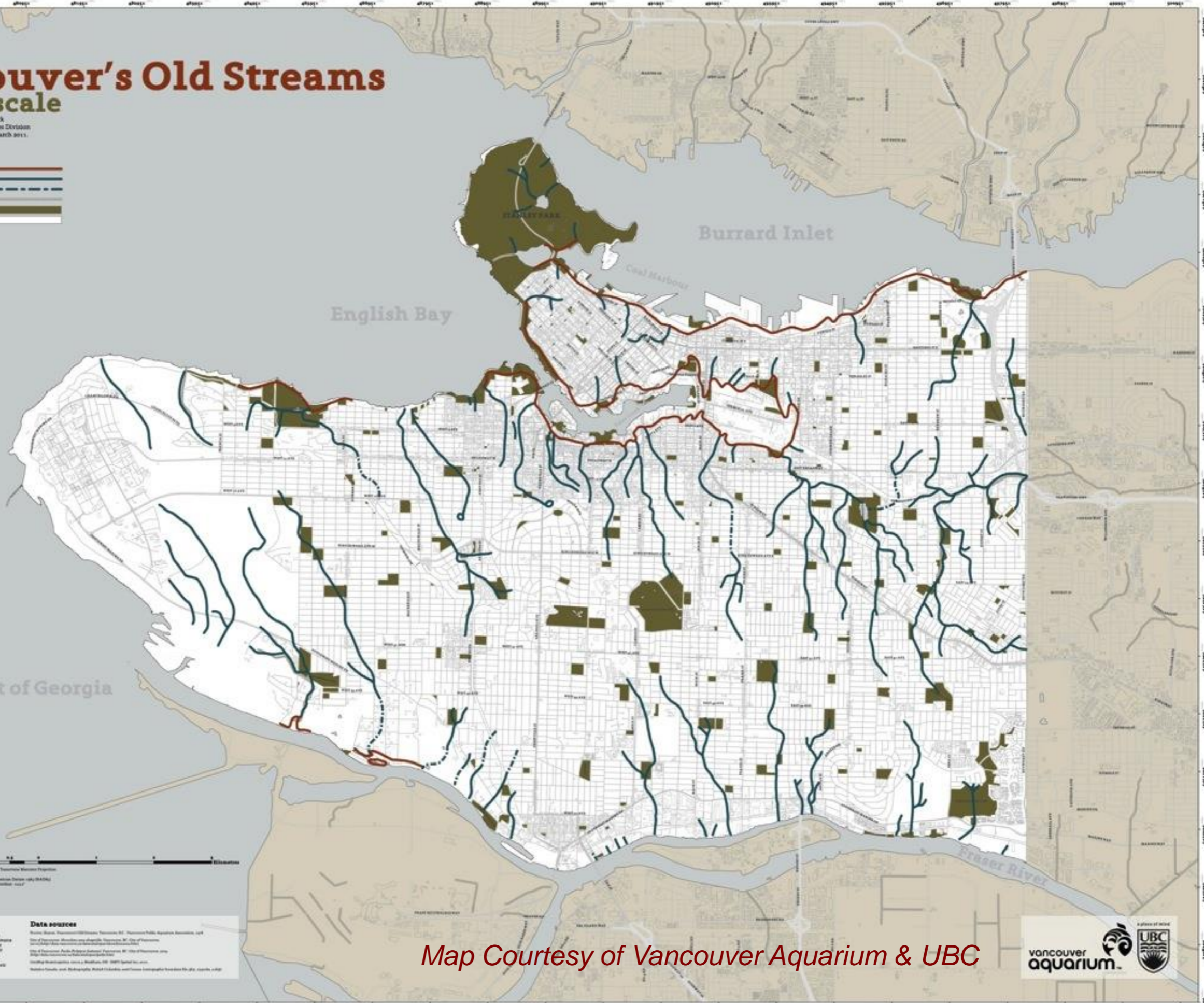


Vancouver's Old Streams

1:20 000 scale

Map digitized and compiled by Paul Lesack
Data Services/Humanities & Social Sciences Division
University of British Columbia Library, March 2011.

- Original shoreline
- Stream
- Estimated guess of stream path
- Minor waterways 2010
- Park areas
- City of Vancouver



Acknowledgements

A very large thank you to Sharon Pfeiffer, Jeff Curtis, Amy Daniels, Jeff Kraybill, Sarah Martin, Wanda Korman and the Vancouver Public Department for allowing the digitization of Vancouver's old streams and making it available to the public.
This project would not have been possible without their participation and support.

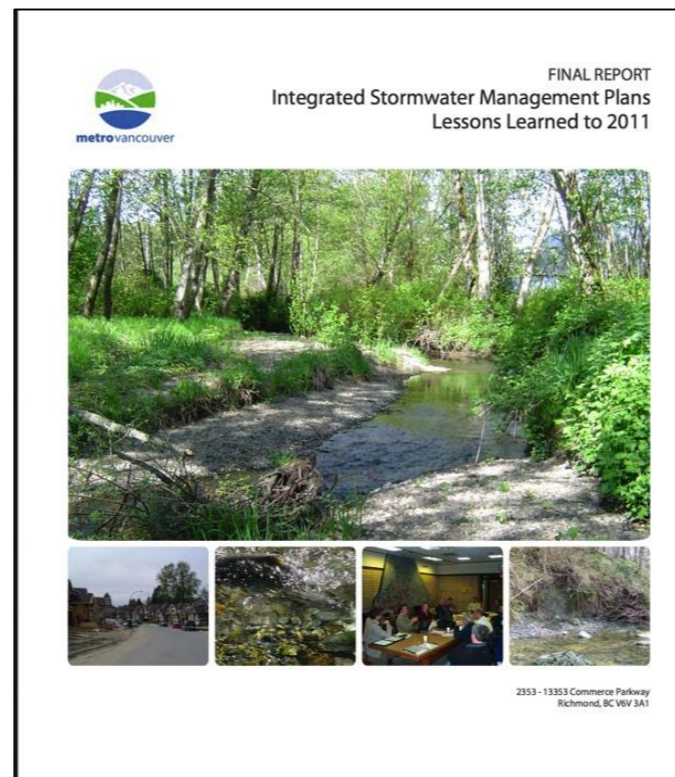
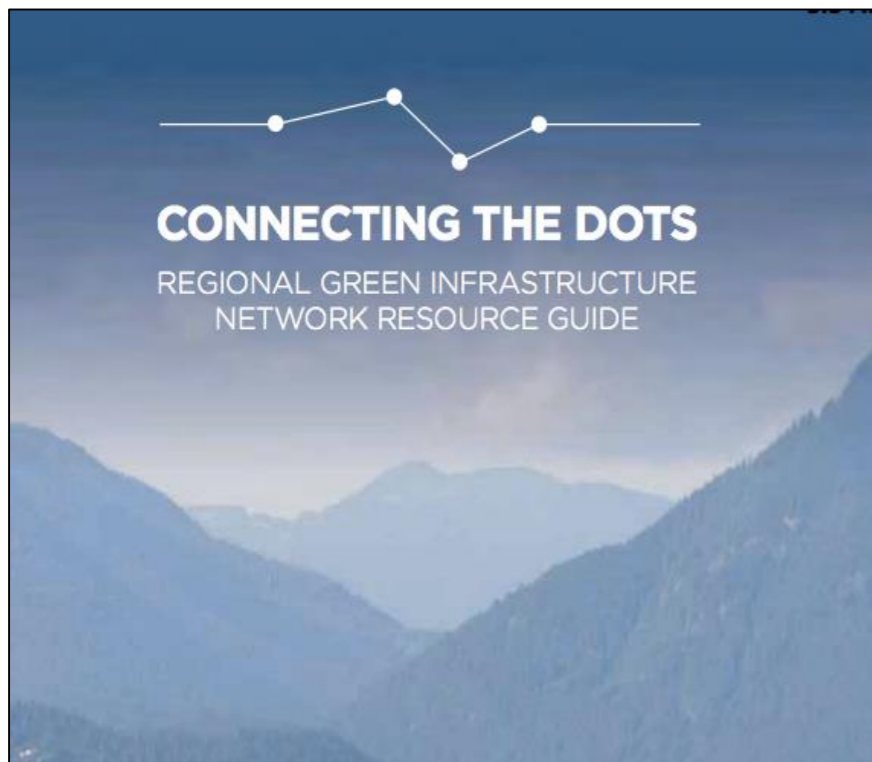
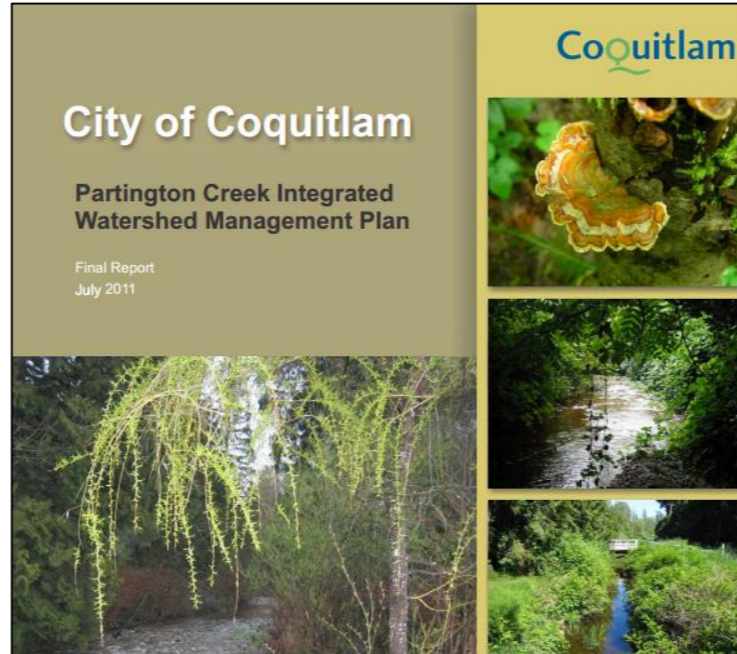
Data sources

Stream Names: Environment Canada, Vancouver BC, Vancouver Public Department, 1971
City of Vancouver: (Available only through Vancouver BC, City of Vancouver)
City of Vancouver: (Available only through Vancouver BC, City of Vancouver)
City of Vancouver: (Available only through Vancouver BC, City of Vancouver)
City of Vancouver: (Available only through Vancouver BC, City of Vancouver)
City of Vancouver: (Available only through Vancouver BC, City of Vancouver)

Map Courtesy of Vancouver Aquarium & UBC



Local Government Promoting Green Infrastructure

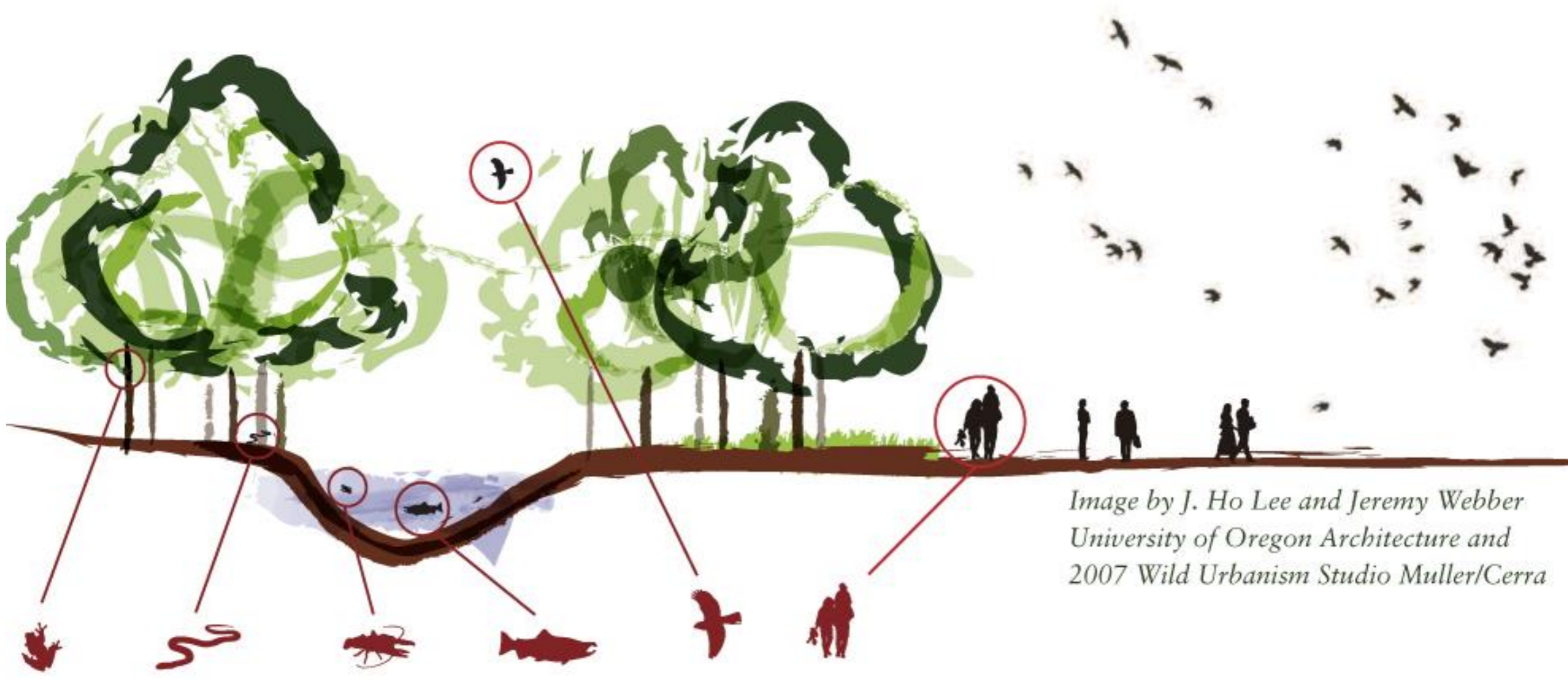


Salmon-Safe Program

- **Pacific Northwest Bio-region**
- **Eco-logo certification for “working landscapes” - urban and agriculture**
- **>500 sites certified – mostly agricultural lands**
- **Partnership Network across region**
- **Peer-reviewed Assessment Standards for each land-use category**



A holistic approach to site design, construction operations and maintenance to improve environmental outcomes over time



*Image by J. Ho Lee and Jeremy Webber
University of Oregon Architecture and
2007 Wild Urbanism Studio Muller/Cerra*

Site Assessment Process

Team of technical experts conduct a site-wide assessment:

- Stormwater management
- Water-use management
- Erosion & sediment control
- Pesticide & chemical use
- Contribution to ecological function
- Habitat protection and restoration





Salmon-Safe Sites

- **Re-use or infiltrate rainwater on site**
- **Reduce water demand**
- **Protect water quality**
- **Support biodiversity & Restore habitat**
- **Ensure low input maintenance**
- **Aim to continuously improve performance overtime**



Certification Benefits

- **Independent validation of environmental performance, identify opportunities for improvement**
- **ID operational efficiencies, cost savings, risk reduction**
- **LEED innovation credit**
- **On-call expert guidance, interdisciplinary team**
- **Demonstrate CSR implementation**
- **Public recognition as env. leader**



MEC

MEC

HEAD OFFICE



YVR – Vancouver International Airport
First airport in the world to achieve Salmon-Safe certification!

This habitat
is helping



This building is by Vulcan,
the world's first Salmon-Safe
accredited developer.

protect
this habitat



Learn more at
vulcan.com/salmonsafe



We're building a future for salmon



Meet our
Salmon-Safe
team:

RUNBERG
ARCHITECTURE
GROUP

COUGHLIN
PORTER
LUNDEEN

HEWITT

Construction Sector Accreditation Initiative - Seattle



Image courtesy of Graphite Design Group via Seattle Times

Google Campus South Lake Union, Seattle

Nike Global Head Office - Portland



Thanks to Nike, they'll run a clean race.



IT'S OUR NATURE TO PRESERVE

What makes Washougal Waterfront Park and Trail the first Salmon-Safe certification on the Columbia River?

A HISTORY OF INDUSTRIAL USE

This site was home to Hambleton Bros. Lumber Co., which operated here for decades. As part of the mill's operations, the riverbank was reshaped with fill and riprap. Prior to development, the site was Cottonwood Forest and Riverine Wetland along the Columbia River, providing important habitat for migrating native salmon and other wildlife.

WHAT CAN YOU DO?

- Clean up after your pet
- Repair your car when it has an oil leak
- Use environmentally safe fertilizers in your yard
- Use native plants in landscaping
- Think twice before using pesticides
- Wash your car in a commercial car wash or on lawn



Many native trees and shrubs are being planted and the Port is assessing opportunities for additional shoreline restoration over time, including removal of the old fishing dock pilings.



Stormwater is managed and treated on-site, including runoff from the parking area through large rain gardens, preventing runoff of polluted stormwater to the river.



Site cleanup included removal of existing pavement, filling the lumber mill pond and capping contaminated sediments from prior milling operations.



Irrigation water use is minimized through conservation practices, particularly in times of drought. The park is maintained with minimal inputs to conserve resources and protect water quality.



Thank You!
Questions?



Amy Greenwood

Program Manager
Salmon-Safe BC

agreenwood@fraserbasin.bc.ca

www.salmonsafe.ca