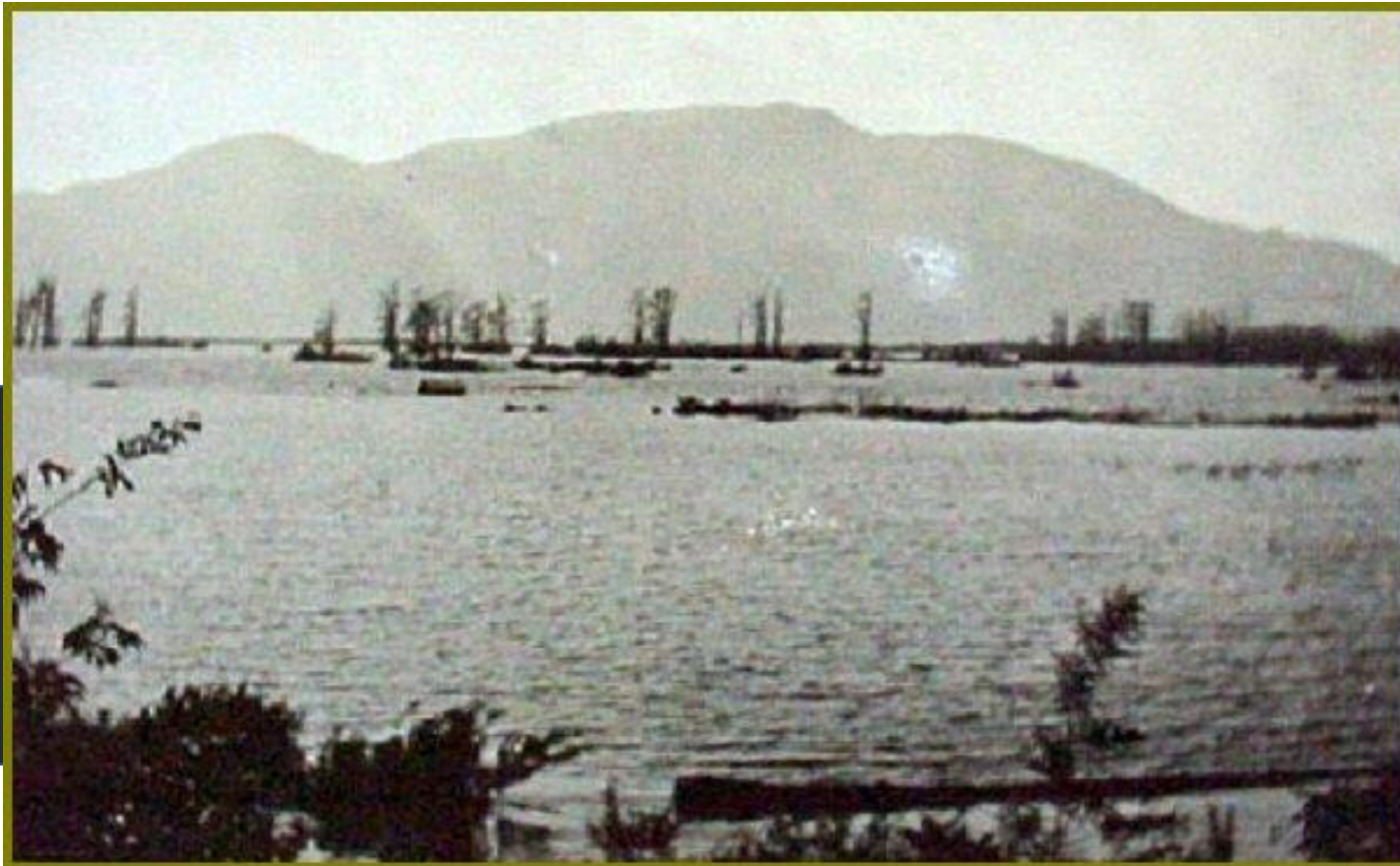


SEMÁ:TH LANDS & RESOURCES DEPARTMENT

Opportunities and challenges on the ground for
First Nations working in the field of Restoration

October 25th, 2018



***S'ólh Téméxwte ikwe'lo. Xólhmet te mekw'
stám ít kwelát*** – This is our Land. We must
take care of everything that belongs to us.

Stephen McGlenn, M.A. (Planning)
Lands & Resources Manager
Semá:th First Nation

Office: 604-852-4041, ext. 223

Cell: 778-347-3702

Email: stephen.mcglen@sumasfirstnation.com



0 5 10 20 30 40 50 km

Date: 12/2/2014

UTM Zone 10
NAD 83

1:800,000

Legend

— S'ólh Téméxw



PRRO
People of the River
Referrals Office



**Stó:lō Research
and Resource
Management Centre**

Sema:th Declaration – Sept. 22 2017

“Sema:th Declares that we shall do all in our power to see that the governments of Canada, British Columbia, and the United States of America recognize in law and in practice, our aboriginal title and aboriginal rights.”



Sema:th Lands Governance Planning Framework

Promoting Health, Well-being & Reclaiming our Xwelmexw Way of Life

Exercising Sema:th Rights, Title & Jurisdiction

*Looking after all that belongs to
Sema:th*

Self-Governance

Sema:th Declaration
Lands & Resources Governance Policy

Government-to-Government

SSEA - CRS
LFFA
C2C, MOU's, etc.

Sema:th Guardians

Cultural Heritage Mapping

Protecting S'ólh Téméxw

*S'ólh Téméxwte ikwe'lo. Xólhmet te mekw' stám ít kwelát –
This is our Land. We must take care of everything that
belongs to us.*

Fisheries

FSC & EO Fisheries
Habitat Restoration
Aquaculture

Forestry

Woodlot
Carbon Credits
Tree Management

Water

Water & Wastewater Infrastructure
SW & GW Protection
Environmental Flows
Flood Protection
Collaborative Watershed Governance

Land Use Planning & Environmental Management

Implementing Land Code Governance

*An informed, transparent, consistent, and credible
decision-making process for land development*

*Sustainable and Appropriate
Economic Development Planning*

Community, Social and Economic Development

Lands Registration

Wills & Estates Management

Law Development & Enforcement

Leasing & Permitting

Lands Development and Compliance
Monitoring

Lands Inventory Database

Emergency Management





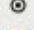

Sema:th Community & Strategic Planning

FHRI Area

20,000 sq. m

LOT 22-2, 1977 RSBC

Legend

-  201810125
-  Exterior Boundary
-  FHRI Restoration area
-  Infrastructure (proposed - approximate)
-  LOT
-  Upper Sumas IR6

Upper Sumas IR6







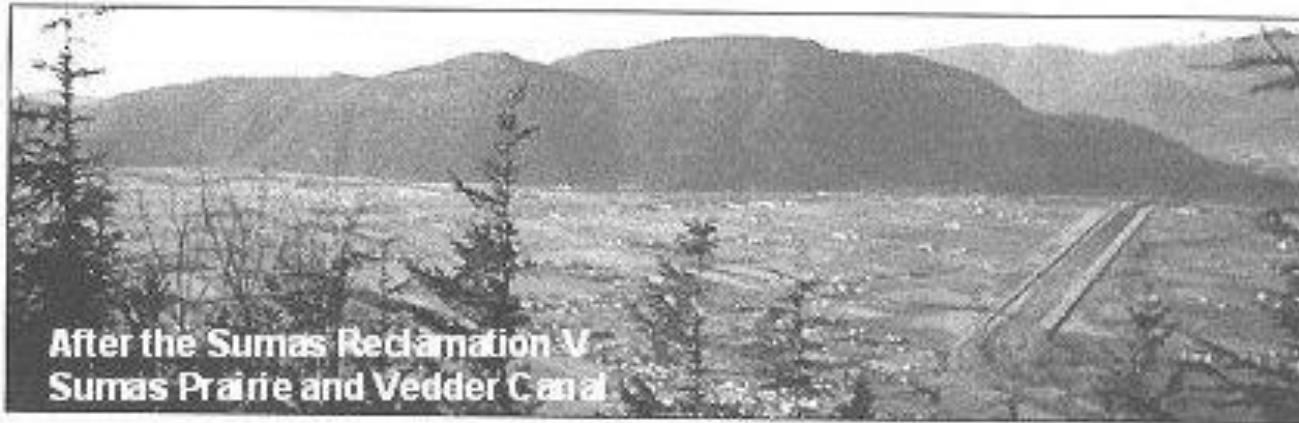


[illegible]

445-A-1f
Nº 25

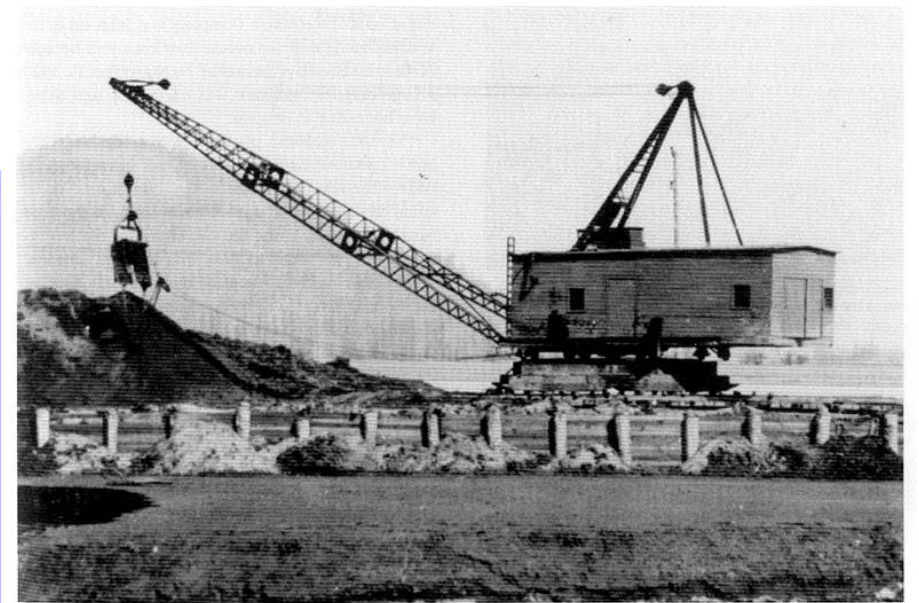


Before...
Sumas Lake



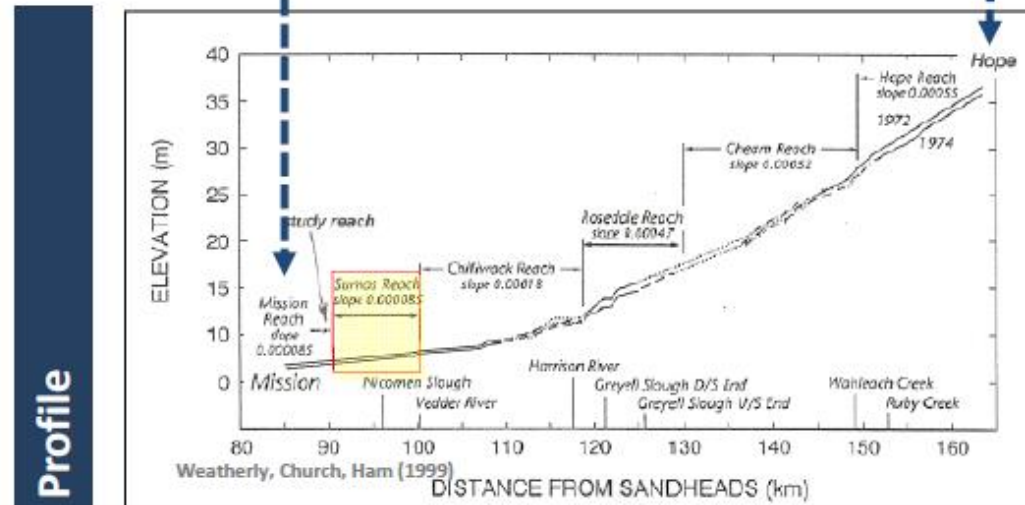
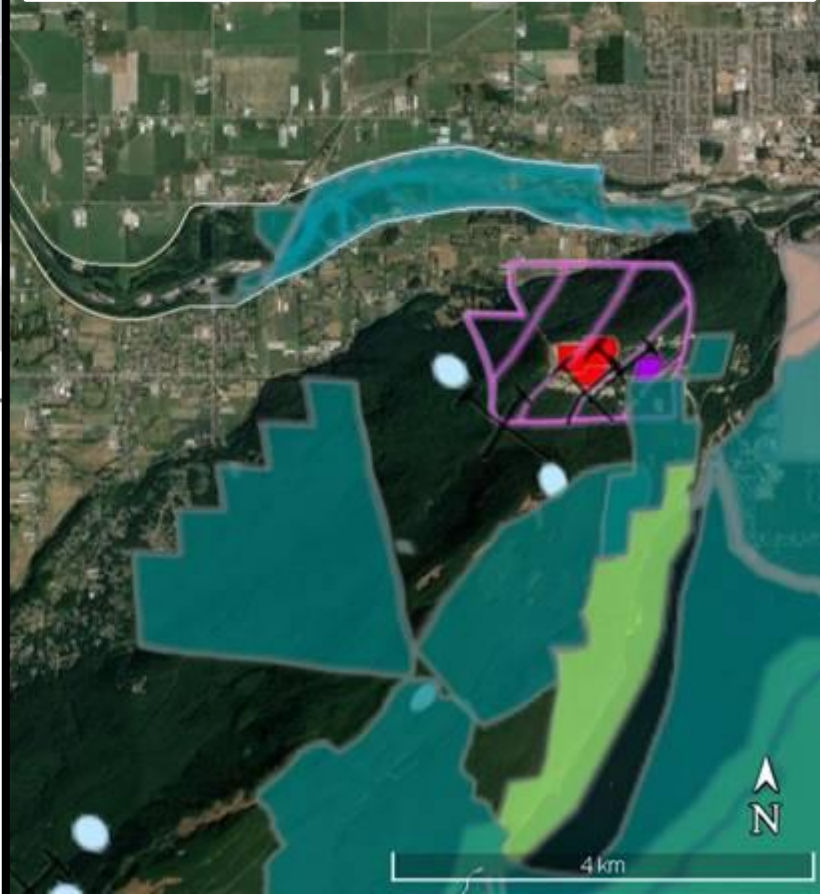
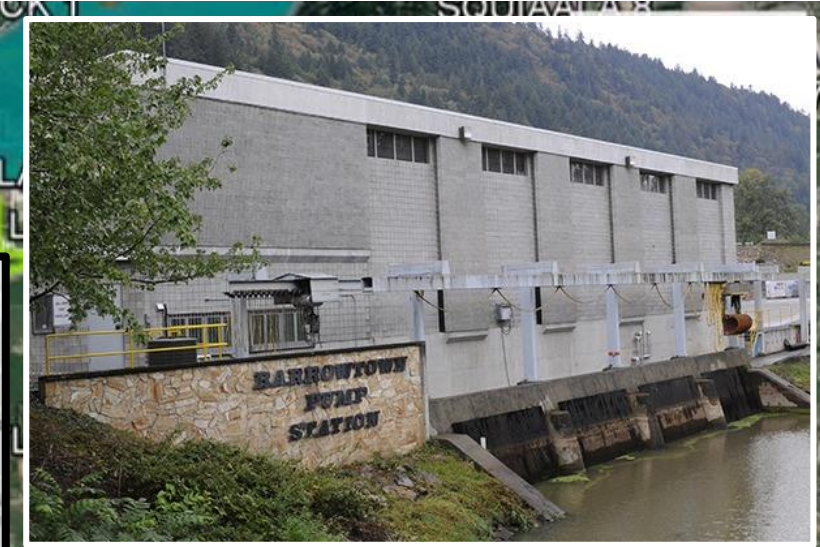
After the Sumas Reclamation V
Sumas Prairie and Vedder Canal

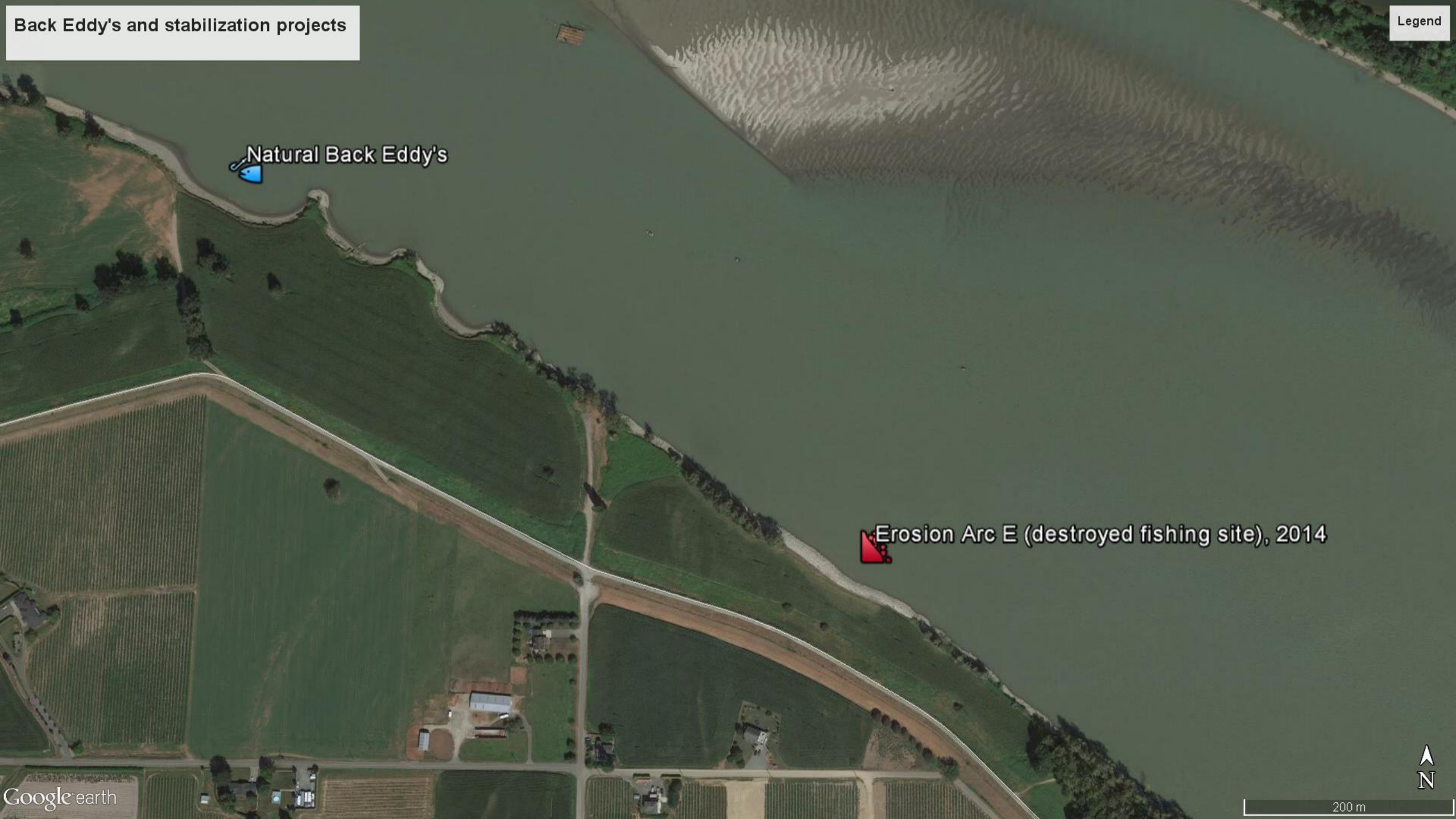
Two
photographs
taken from
Majuba Hill



Electric dragline building up the dyke on the Vedder Canal.





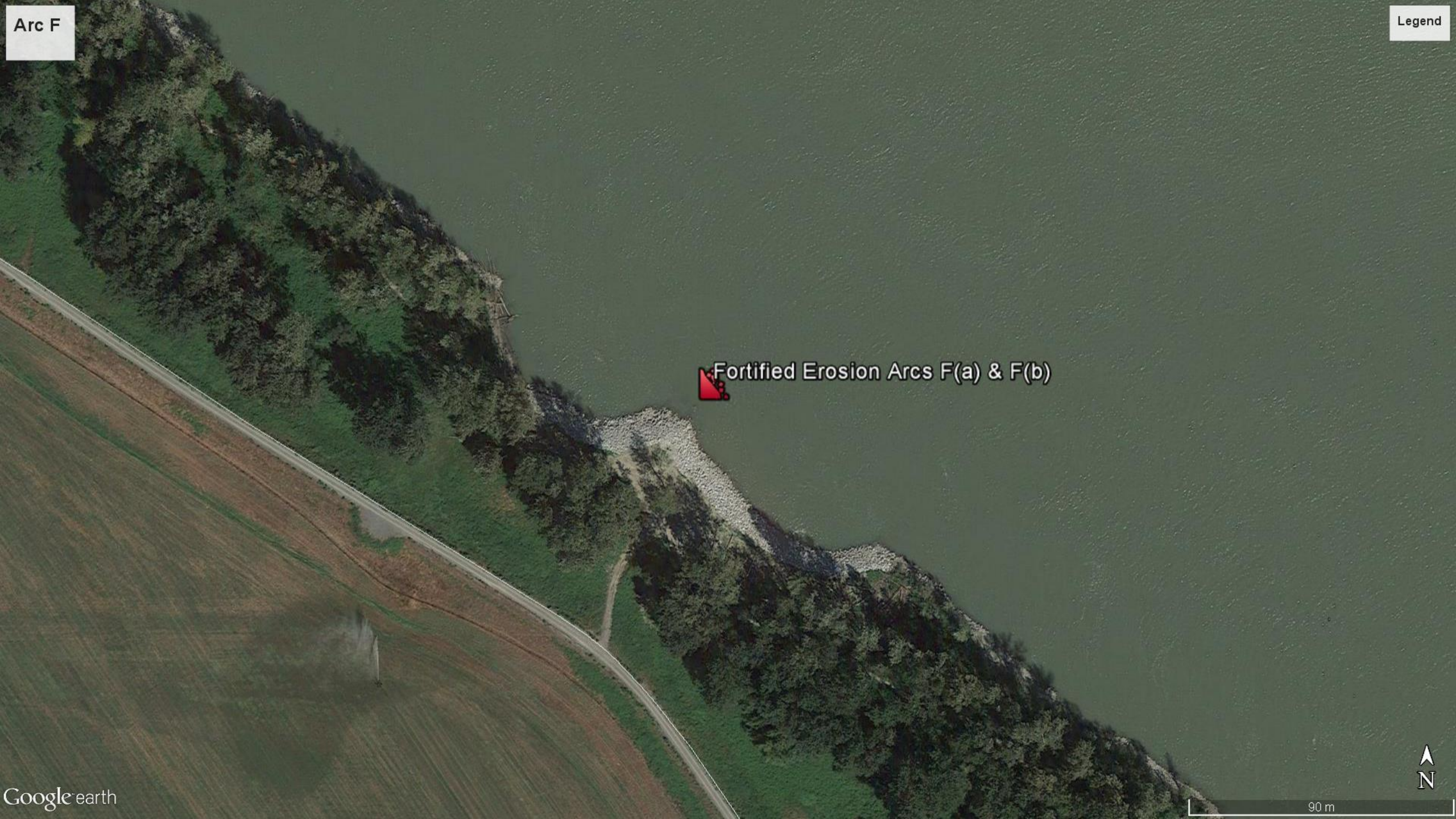


Back Eddy's and stabilization projects

Legend

Natural Back Eddy's

Erosion Arc E (destroyed fishing site), 2014



Arc F

Legend

Fortified Erosion Arcs F(a) & F(b)



Bank stabilization and restoring Sema:th Fishing Sites

\$10 Million in funding announced by BC

Proposed Bank Protection Spurs -
Preliminary Design and Locations

Impacts to aboriginal rights:

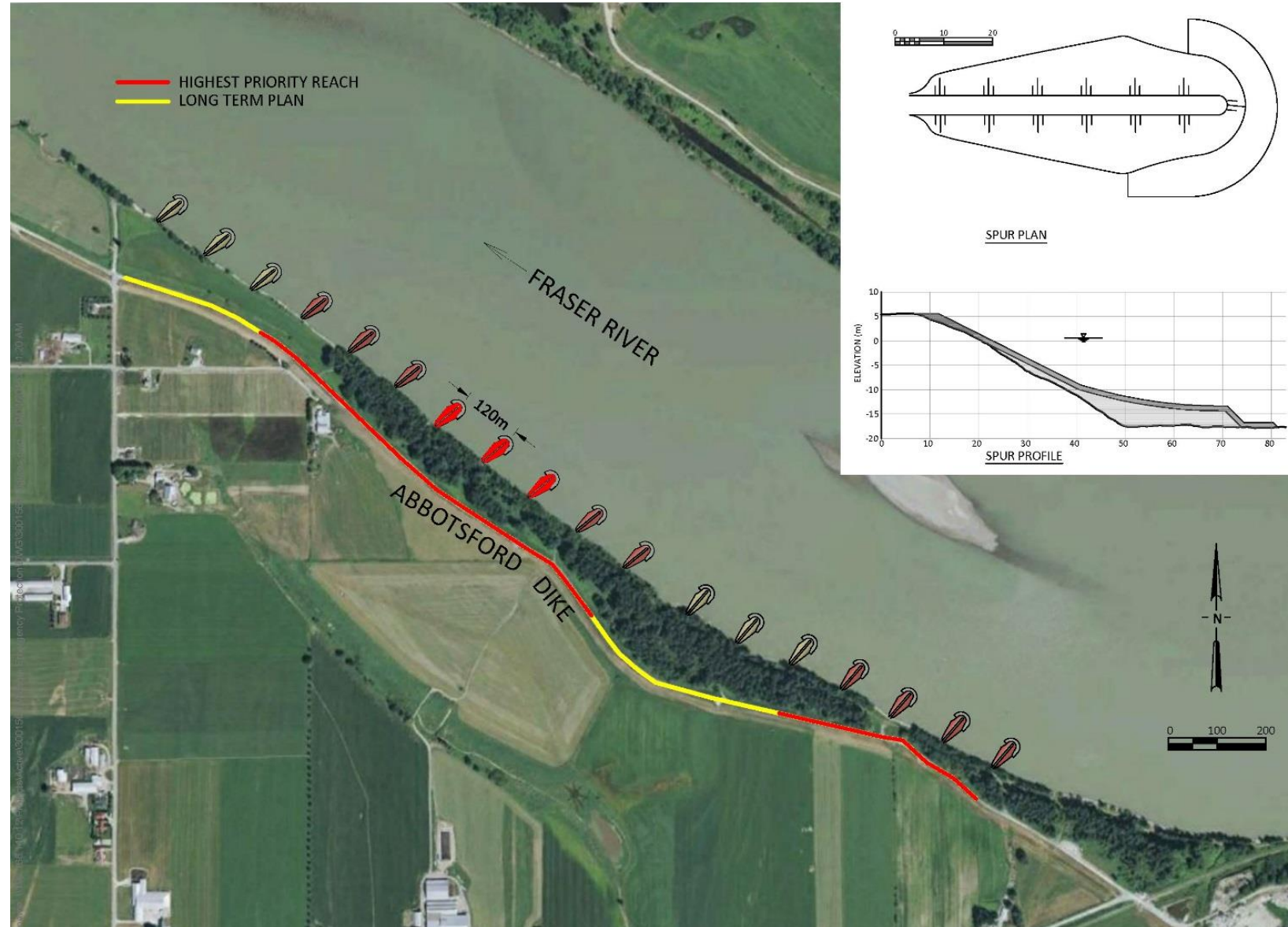
Diking

Loss of access and use of riparian areas for
cultural gathering and practicing fisheries

Decades of rip-rapping

Destruction of Fishing Sites – no
accommodation provided to Sema:th to
date.

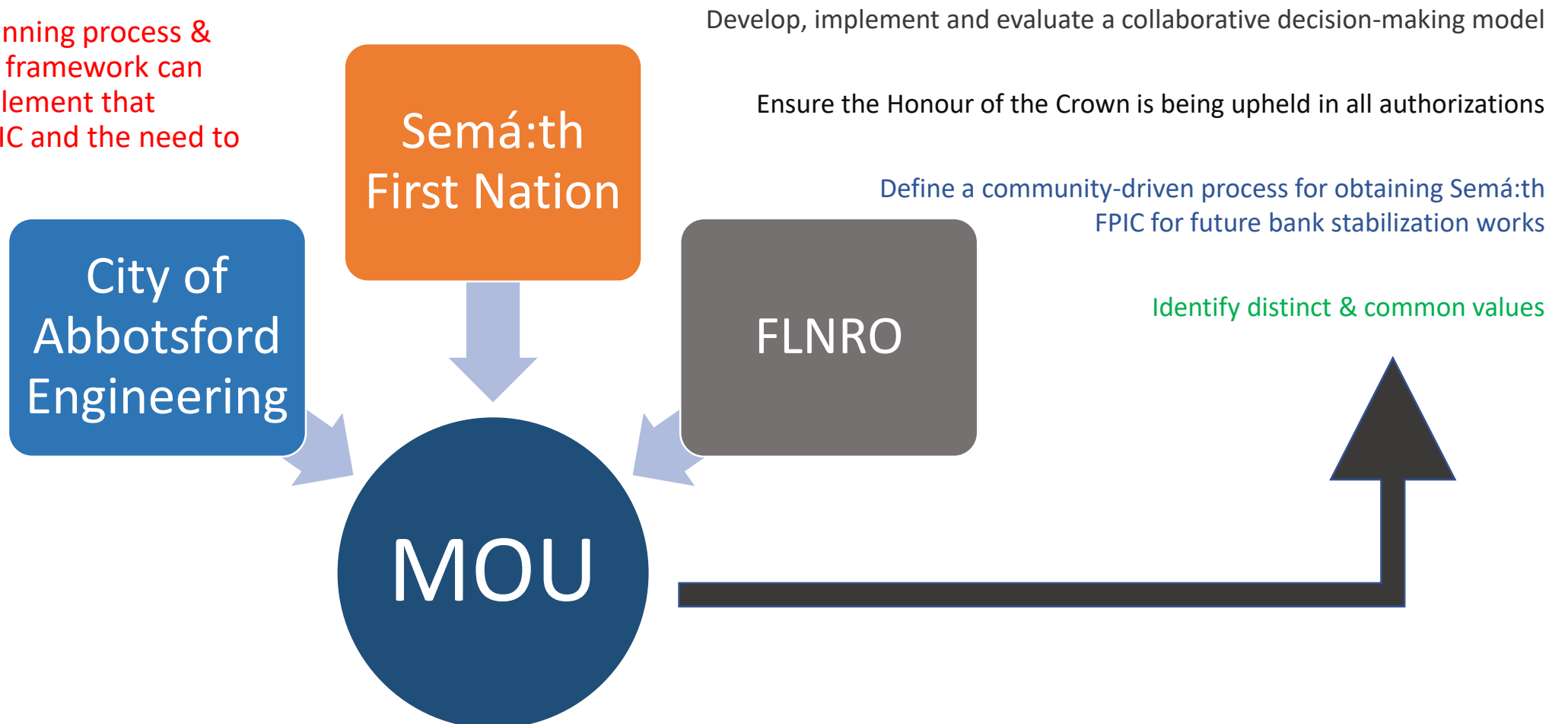
MOU: Sema:th, FLNRORD, EMBC,
Abbotsford,



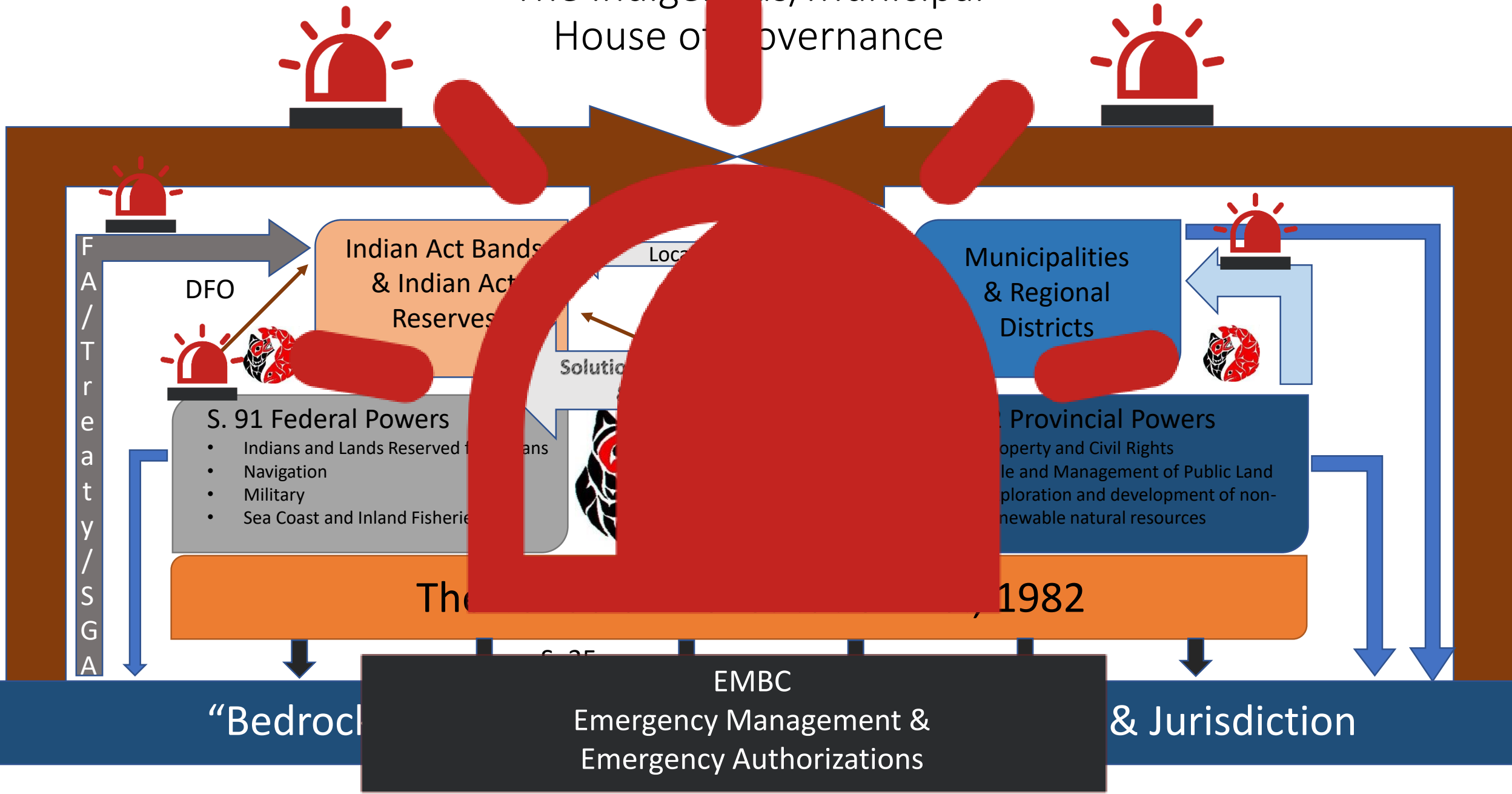
Moving forward:

Long-term Protection of Matsqui Dike & Semá:th Fishing Sites

- What kind of planning process & decision-making framework can we create & implement that respects ART, FPIC and the need to protect dikes?



The Indigenous/Municipal House of Governance



Opportunities & Needs in Restoration:

Restoring an Intact Indigenous Cultural Landscape

Restoring Indigenous Jurisdiction

- FAFNLM, BCT, SGA
- UNDRIP & Rights Recognition?
- Restoring Indigenous Language
- TUOS

Collaborative Resource Stewardship (CRS)

- Pilot initiatives across BC
- Book-ending SSEA consultation
- Pre-decision planning
- Post-decision monitoring & enforcement
 - Guardians!

Responding/Adapting to Climate Change

- Restoring Indigenous Jurisdiction
- Water – EF's
- Natural Asset Management
- Ecosystem Services Mapping
 - Cultural ES





0 5 10 20 30 40 50 km

Date: 12/2/2014

UTM Zone 10
NAD 83

1:800,000

Legend

--- S'ólh Téméxw



PRRO
People of the River
Referrals Office



**Stó:lō Research
and Resource
Management Centre**