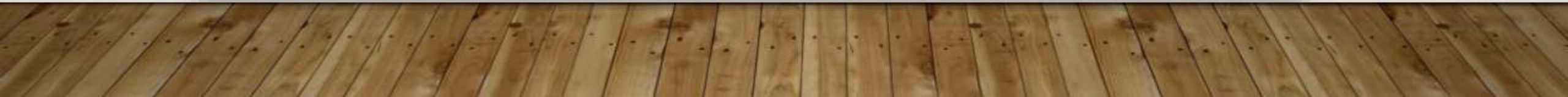


“SUPERNATURAL”

- A social venture in the Kwakwaka'wakw Territory of the Great Bear Rainforest of British Columbia
- A catalyst for healing, connection and sustainable Indigenous enterprise





ABOUT US - AGENDA

- Our Vision and Approach
- Our Results – 2020 Social Impact
- Our Programs
 - Language and Culture
 - Food Security and Sovereignty
 - Health and Traditional Healing
- 2021 Priorities
- Construction Progress Update

FOR OUR CHILDREN AND OUR CHILDREN YET UNBORN

- Healing for First Nations youth begins with resurrection of our language and pride in our cultural heritage
- We recognize the role of our land as teacher and healer



OUR MISSION

- Re-connect our people to our origins, culture and land
- Create and support Indigenous businesses as a force for good in our communities



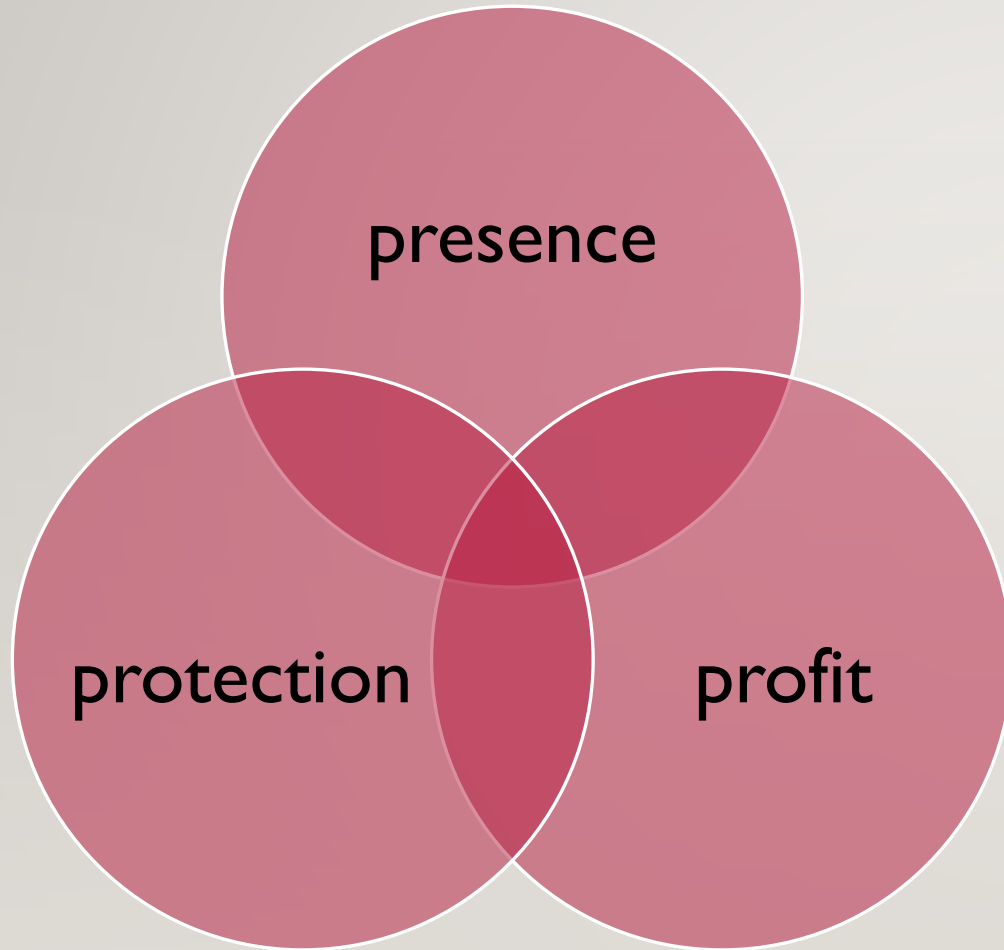
BALANCING PURPOSE AND PROFITS

Proceeds of ecotourism fund traditional healing programs and teachings in all aspects of Kwakwa'wakw language and culture

- Reinvestment into surrounding communities through projects and programming



OUR APPROACH



OUR PILLARS

- Language and Health Programs
- Food Sovereignty
- Capacity Building Initiatives
- Guardianship
- Indigenous Destination Development

2020 SOCIAL IMPACT

JOB	36 jobs created (mix of f/t and p/t, direct and indirect)
LANGUAGE AND CULTURE	Program Director and 5 language apprentices hired ➤ First program of its kind
FOOD SECURITY	120 garden boxes built +19,500 lbs of prawns and halibut distributed ➤ 9 communities served
PRESENCE	First Kwaka'wakw occupation of our sacred river in 80 years Phase One Construction on track for completion Spring 2021

OUR PROGRAMS



LANGUAGE AND CULTURE

Led by Ikawegi'lakw Deanna Nicolson, BBA, MEd –
specializes in Indigenous Language preservation

Partners: North Island University, University of British
Columbia, SD 85, University of Victoria



Language & Culture Apprentices



Gusdidzas, Matt Ambers



Malidi, Sydney Roberts



**K'wak'wabalas,
Gloria Hunt**



Taayisim, Kiara Peterson



Petr Javier

FOOD SOVEREIGNTY

- COVID-19 highlighted the fragility of our supply chain
- Funding and support through partners including
 - MakeWay
 - Backpack Buddies
 - Iskwew Air
 - Impakt Foundation
 - Global Medic
 - Power to Be
 - Procter and Gamble
 - Soap for Hope
 - Private donors
- Garden Box Program
- Traditional Food Harvesting and Fishing
- PPE and Hygiene Supplies Delivered to 9 Communities
- 120 Garden Boxes Built
- +19,500 lbs of prawns and halibut distributed

Food Security *Ocean*



Food Security *Land*



CAPACITY BUILDING

- Employment partners - Tourism
 - Nimmo Bay
 - Wickaninnish Inn
 - Farewell Harbour
- Indirect Employment and Procurement



Dave Sawyer,
Gala Construction

2021 PRIORITIES

- Culture Camp Programming
- Food Security
- Employment and Training
- Multi-year Funding

CONSTRUCTION STATUS UPDATE



PHASE ONE: CULTURE CAMP

Target completion Spring 2021

Year round cultural programming and language revitalization

2400 sq ft main camp and tents and 400 ft dock

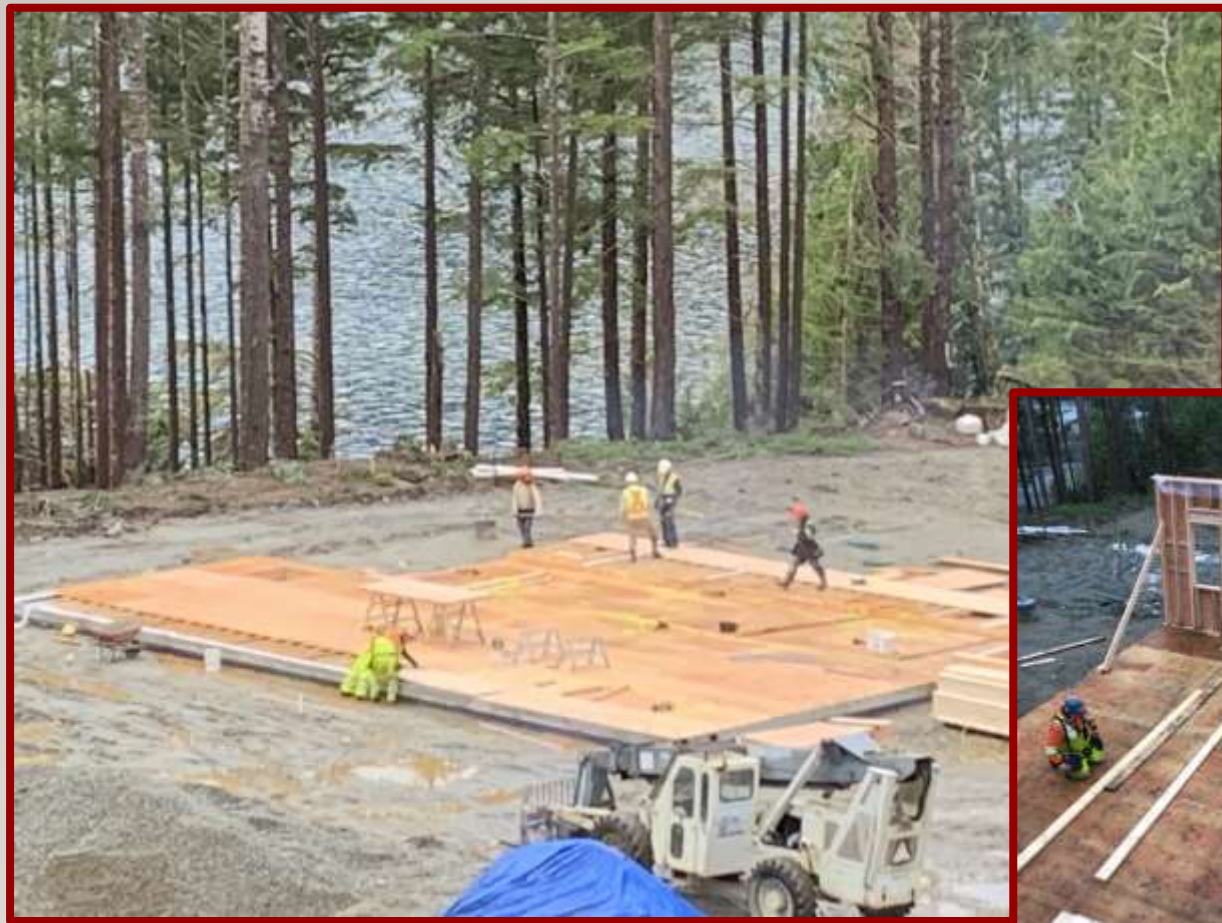
Capacity for 24 students, their teachers and 12 support staff

Watersports facilities, workshop and storage

Expanded trails

Solar-powered, self contained





PHASE TWO: HEALING VILLAGE & WORLD- CLASS ECOTOURISM DESTINATION

Early immersion language training and certification

Healing programs with FNHA

Ecotourism – guides with local Indigenous knowledge



Concept: McLennan Design



Concept: McLennan Design

NAWALAKW HEALING LODGE

Masterplan Concept

- 1 Arrival Dock
- 2 Outfitter Station
- 3 Solar Covered Boardwalk
- 4 Nawalakw Lodge
- 5 Nawalakw Wellness Center
- 6 Nawalakw Cabins
- 7 Bear Watching Pavilion
- 8 Chef's Cabin
- 9 Caretaker's Cabin
- 10 Bear Watching Pavilion
- 11 Operations Center
- 12 Staff Village
- 13 Floating Sauna

TRAIL TO LAGOON COVE

TRAIL TO KINGCOME
AND BEAR WATCHING PAVILION

Phase 2 - Healing Village and Lodge

OUR COMMITMENT

- ✓ Respect our connections to the land, air, sea, while creating a robust, prosperous economy
- ✓ Prioritize local hiring and sourcing
- ✓ Create a model that can be replicated by other Indigenous communities anywhere





GILAKAS'LA | THANK YOU

www.nawalakw.com



nawalakw